

Important Dates!

EVENTS

Math Contest in Modeling (MCM)

Feb 18-22, 2010

Rowan Sciences Day

Fri Mar 26 Sciences Hall

Rowan STEM Fri Apr 23

MAA-NJ Section Spring Meeting/Garden State Undergraduate Math Conference (GSUMC)

Sat April 10, 2010
Middlesex County College
Edison, NJ

NCTM Annual Meeting and Exposition:

Connections: Linking
Concepts and Context,
April 21-24, 2010
San Diego, CA

DEPARTMENT MEETINGS

Spring 2009

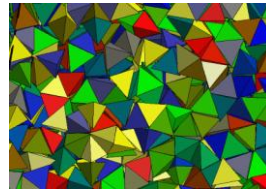
Wed Feb 3
Wed Mar 3
Wed Apr 14
Wed May 12 (Retreat)

Spring Tutoring Schedule

Full schedule available at
www.rowan.edu/math

Email newsletter comments to:

nguyen@rowan.edu



New Tightest Tetrahedra Packing

<http://www.nytimes.com/2010/01/05/science/05tetr.html>

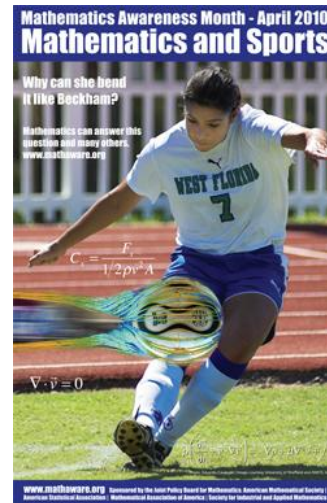


Math Awareness Month Kicks Off April 2010

The theme for Mathematics Awareness Month April 2010 is **Mathematics and Sports**. Sports naturally involve data, strategies and chance, each of which is perfectly suited to mathematical analysis. Beyond the obvious uses of mathematics for things such as rating baseball players and football quarterbacks, mathematics is used to design the dimple patterns on golf balls and the composition of racing tires, ranking teams and determining tactics.

The Math Department will be sponsoring colloquium talks discussing this theme in April. Look out for further announcements. Information about Math Awareness Month 2009 and its activities can be found at

www.mathaware.org.



Janet Caldwell Awarded Prestigious State Grant

Dr. **Janet Caldwell**, Professor of Mathematics and Director of McSIIP, has been awarded a three-year Improving Teacher Quality Partnership (ITQP) grant by the NJ Department of Education starting this year (\$260,000 funding for the first year) to support a professional development project in which Dr. Caldwell is the Principal Investigator. The project is a partnership involving Rowan University, the ETTC at EIRC, non-public schools, and three high-needs LEAS: Lindenwold, Pennsauken, and Millville to improve teaching and learning in grades 5-12 in three subject areas (Mathematics, Language Arts and a third subject to be determined). The first year will involve faculty from Rowan University's Mathematics, English and Reading departments and the Special Education

department in the College of Education.

Goals of the project include expanding the number of teachers who are highly-qualified, building capacity to meet 2009 revised state standards in targeted subject areas, and increasing the level of integration of 21st century skills, technology, and global perspectives into instruction. (Contributed by McSIIP)



Professor Janet Caldwell

SUMMER 2010 CLASSES

First 5-week session
May 17 - June 17

Second 5-week session
June 21 - July 22

Registration begins March 2:
www.rowan.edu/colleges/cpc/e/summer/

HOLIDAYS

Spring Break
March 15-19 (NO CLASSES)

Good Friday
April 2 (NO CLASSES)

2010 NSF SUMMER REU'S

See full list of math REU's at:
http://www.nsf.gov/crssprgm/reu/list_result.cfm?unitid=5044

2010

$2345 \cdot 6/7 = 2010$
 $2/3 \cdot 45 \cdot 67 = 2010$
 $36 \cdot 57 - 42 = 2010$
 $\text{SUM}(n^3 - n/3) \text{ for } n = 0 \dots 9 = 2010$
 $0^7 + 1^9 + 2^8 + 3^6 + 4^5 = 2010$
 $12 + 34 \cdot 56 + 7 + 89 = 2010$
 $2 \cdot 3 \cdot 5 \cdot (7 + 11 + 13 + 17 + 19) = 2010$
 $9 + 8 \cdot 7 + 6 \cdot 54 \cdot 3 \cdot 2 + 1 = 2010$

<http://www.mathpuzzle.com/>

Noteworthy Achievements

PUBLICATIONS

Abdul Hassen, *A Remark on Nondiscrete Hecke Groups*, J. of Algebra, Number Theory and Appl. 14 (2009), No. 2, 221-226.

Christopher Lacke, *Workshop Statistics: Discovery with Data JMP Companion Manual*, 3rd Ed. 2009, Wiley; *Practitioner's Guide to Statistics and Lean Six Sigma for Process Improvements* (with Harry, Mann, Hodgins, and Hubert), 2010, Wiley; *Introductory Statistics* (with Mann), 7th Ed. 2010, Wiley.

Tom Osler, *Euler and the functional equation for the zeta function*, The Mathematical Scientist 34 (2009), 62-73.

Adam Romasko and Tom Osler, *Triangles of equal area in a hyperbola*, The Math. Spectrum 42 (2009-10), No. 2, 70-74.

Umashanger Thayasivam and T. N. Sriram, *L₂ estimation of mixture complexity for count data*, Computational Statistics and Data Analysis 53 (2009), 4243-4254.

Christopher Tippie, Kristin Masters and Tom Osler, *Translation with notes of Euler's paper E745, Notes and Synopsis*, Euler Archive.

Jonathan Weisbrod, *An unusual look at primitive Pythagorean triples*, to appear in Math. Spectrum.

Dexter Whittinghill, *Classes That Click: Fast, Rich Feedback to Enhance Student Learning and Satisfaction*, with John C. Chen and Jennifer A. Kadowec, to appear in J. of Engineering Education.

PRESENTATIONS

Eric Aspling, *Integers whose sums, products, and sums of their products two a peice are squares*, Joint Math Meetings Poster Session, San Francisco, CA, Jan 2010.

Laura Coffey, *Simple and Compound Bernoulli Denominators from Maximal Modulus Exponentiation*, Joint Math Meetings Poster Session, San Francisco, CA, Jan 2010.

Lee Collins, *Law of Cosines Generalized for any Polygon and any Polyhedron*, Joint Math Meetings Poster Session, San Francisco, CA, Jan 2010.

Emily Dietrich, *Euler 323: On three square numbers of which the sum and the sum of the products will be a square*, Joint Math Meetings Poster Session, San Francisco, CA, Jan 2010.

Gary Itzkowitz and Jay Schiffman, *The Role of Technology as an Additional Representation in the K-12 Curriculum*, South Jersey Mathematics Alliance Fall Conference, Rowan University, Glassboro, NJ,

Dec 2009.

Hieu Nguyen, *Foot to the Pedal: Constant Pedal Curves and Surfaces*, Joint Math Meetings, San Francisco, CA, Jan 2010.

Thomas Osler, *Another look at Euler's parallel oblique angled diameters*, Joint Math Meetings, San Francisco, CA, Jan 2009.

Jasen Scaramazza, *Euler on Astronomy: Memoir on the Maximum Value of an Equation of the Planets*, Joint Math Meetings Poster Session, San Francisco, CA, Jan 2010.

Jay Schiffman, *Rowan's High School Mathematics Model*, NJAMTE P-12 Math. Preparation of Pre-Service Teachers in NJ Conference, Mercer County CC, West Windsor, NJ, Nov 2009; *Integrating the TI-83 plus / TI-84 Plus into Algebra II and Precalculus*, Workshop For Advanced Users sponsored by TI, Middlesex County College, Edison, NJ, Dec 2009.

Jonathan Weisbrod, *Patterns Associated with the Barning-Hall Tree of Primitive Pythagorean Triples*, Joint Math Meetings Poster Session, San Francisco, CA, Jan 2010.

CERTIFICATION

Christina Branson, awarded Mathematica Student Certification at the Advanced Foundations Level (the highest level).