

Research Brief

A publication from Rowan University's **Office of Institutional Research and Planning** to provide targeted information to the Rowan community

September 2003

Volume FY 2004: Brief 2

Fall 2003 Enrollment

The Office of Institutional Research and Planning, in a continuing effort to improve the reporting of useful information in a timely manner, has changed some of the content of its Fall Enrollment *Research Brief*. The first change is in one of the definitions of full-time equivalent student (FTE). This change, labeled "IPEDS FTE" accommodates the comparison of Rowan to other institutions. A second change, on page two, includes the total FTE students serviced by each department. These figures are used to calculate the student:faculty ratio. The third change, on page three, combines all curriculum codes together in an academic department. The final change to this *Research Brief* is on page four. One graph displays the distribution of Rowan students by ethnic code. Two additional graphs show the change in average course load for matriculated undergraduates in Fall 2002 and Fall 2003. We hope these changes are useful. And, as always, your comments are appreciated.

How do we calculate a full-time equivalent student (FTE)?

There are two common formulae used in the calculation of an FTE.

FTE definition 1:

The sum of undergraduate student credit hours divided by 15 plus the sum of graduate student credit hours divided by 12.

Example:

Undergraduate SCH		
109,541/15	=	7302.7
Graduate SCH		
7,075/12	=	589.6
Total FTE (7302.7+589.6)	=	7892.3

FTE definition 2 (IPEDS FTE):

Used for mandatory federal reporting (i.e., IPEDS) and publications ranging from Baron's to U.S. News. The full-time headcount plus 1/3 of part-time headcount.

Example:

Full-time HC	=	7039
Part-time HC / 1 3 (2628/3)	=	876
Total FTE (7039+876)	=	7915

Total Headcount	9667
SCH	116,616.0
FTE (Definition 1)	7892.32
FTE (Definition 2)	7915.00

Gender

Female	5702
Male	3965

Courseload	SCH	Headcount
-------------------	------------	------------------

Undergraduate

Full-Time	100776.5	6823
Part-Time	8764.5	1488
Undergrad Totals	109541.0	8311

Graduate

Full-Time	2573.0	216
Part-Time	4502.0	1140
Graduate Totals	7075.0	1356

University Totals	116616.0	9667
--------------------------	-----------------	-------------

Ethnic Breakdown

Black	861	9%
American Indian/Native Alaskan	29	less than 1%
Asian	290	3%
Hispanic	494	5%
White	7653	79%
Not Reported	340	4%

(continued on page 4)

Total Semester Credit Hours by Student Level - Spring 2003

This table reflects the number of semester credit hours consumed by students based on the student's class level. For instance, the accounting department generated 2,412 credit hours for the Fall 2003 Semester. Of these 2,412 credit hours, 573 were

consumed by freshman, sophomore, and non-matriculated students. A total of 1,662 were consumed by junior and senior students and the remainder by certification, post-bac, graduate and doctoral students.

	Lower Division	Upper Division	Total Undergrad	Post/Bacc & Cert	Graduate Certs	Graduate	TOTAL	FTE
BUS ACCF	573.0	1662.0	2235.0	84.0	0.0	93.0	2412.0	162.35
BUS no dept	0.0	0.0	0.0	0.0	0.0	108.0	108.0	9.00
BUS MANG	678.0	3066.0	3744.0	18.0	0.0	216.0	3978.0	268.80
BUS MARK	300.0	1326.0	1626.0	24.0	0.0	3.0	1653.0	110.25
Business	1551.0	6054.0	7605.0	126.0	0.0	420.0	8151.0	550.40
COMM CORH	4627.0	621.0	5248.0	0.0	0.0	168.0	5416.0	363.87
COMM COSD	2988.0	2268.0	5256.0	0.0	0.0	0.0	5256.0	350.40
COMM JCWR	261.0	1104.0	1365.0	0.0	0.0	129.0	1494.0	101.75
COMM PBRL	219.0	1092.0	1311.0	0.0	0.0	408.0	1719.0	121.40
COMM RTVF	483.0	1869.0	2352.0	0.0	0.0	3.0	2355.0	157.05
Communication	8578.0	6954.0	15532.0	0.0	0.0	708.0	16240.0	1094.47
ED EDLD	2.0	12.0	14.0	0.0	57.0	1253.0	1324.0	110.10
ED EECE	216.0	2115.0	2331.0	190.0	4.0	105.0	2630.0	177.15
ED HES	2547.0	3620.0	6167.0	49.0	0.0	4.0	6220.0	414.73
ED READ	490.0	1077.0	1567.0	63.0	0.0	285.0	1915.0	132.42
ED SEED	1259.0	1872.0	3131.0	360.0	66.0	1310.0	4867.0	347.40
ED SPED	438.0	2059.0	2497.0	323.0	68.0	1469.0	4357.0	316.08
Education	4952.0	10755.0	15707.0	985.0	195.0	4426.0	21313.0	1497.88
ENGN CE	0.0	266.0	266.0	0.0	0.0	21.0	287.0	19.48
ENGN CHE	32.0	302.0	334.0	0.0	0.0	51.0	385.0	26.52
ENGN ECE	58.0	579.0	637.0	0.0	0.0	123.0	760.0	52.72
ENGN no dept	965.0	641.0	1606.0	0.0	0.0	76.0	1682.0	113.40
ENGN MECH	0.0	626.0	626.0	0.0	0.0	30.0	656.0	44.23
Engineering	1055.0	2414.0	3469.0	0.0	0.0	301.0	3770.0	256.35
FPA ART	1693.5	2182.5	3876.0	12.0	12.0	15.0	3915.0	261.45
FPA MUS	1666.5	987.0	2653.5	13.0	0.0	134.0	2800.5	188.93
FPA THD	1121.0	918.5	2039.5	0.0	0.0	56.0	2095.5	140.63
Fine & Perf Arts	4481.0	4088.0	8569.0	25.0	12.0	205.0	8811.0	591.02
LAS BISC	1325.0	1730.0	3055.0	0.0	0.0	9.0	3064.0	204.42
LAS CHEM	1366.0	706.0	2072.0	0.0	0.0	0.0	2072.0	138.13
LAS CSCI	1722.0	2012.0	3734.0	3.0	0.0	3.0	3740.0	249.38
LAS ECON	1365.0	1092.0	2457.0	6.0	0.0	3.0	2466.0	164.45
LAS ENGL	1437.0	2742.0	4179.0	0.0	0.0	3.0	4182.0	278.85
LAS GEAN	1346.0	1447.0	2793.0	15.0	0.0	0.0	2808.0	187.20
LAS HIST	2172.0	1917.0	4089.0	18.0	0.0	0.0	4107.0	273.80
LAS INTR	162.0	330.0	492.0	0.0	0.0	0.0	492.0	32.80
LAS LANG	981.0	1041.0	2022.0	0.0	0.0	15.0	2037.0	136.05
LAS LAWJ	1371.0	2276.0	3647.0	3.0	0.0	0.0	3650.0	243.33
LAS MATH	6294.0	2878.0	9172.0	43.0	0.0	78.0	9293.0	620.83
LAS PHRE	1479.0	1662.0	3141.0	0.0	0.0	0.0	3141.0	209.40
LAS PHYS	1025.0	1096.0	2121.0	10.0	0.0	0.0	2131.0	142.07
LAS POSC	1293.0	1173.0	2466.0	3.0	0.0	0.0	2469.0	164.60
LAS PSY	2984.0	3804.0	6788.0	21.0	9.0	685.0	7503.0	511.77
LAS SOC	1821.0	2736.0	4557.0	0.0	0.0	3.0	4560.0	304.05
Liberal Arts & Sci	28143.0	28642.0	56785.0	122.0	9.0	799.0	57715.0	3861.13
NC INTR	136.0	202.0	338.0	0.0	0.0	0.0	338.0	22.53
NC HONR	197.0	81.0	278.0	0.0	0.0	0.0	278.0	18.53
Total	49093.0	59190.0	108283.0	1258.0	216.0	6859.0	116616.0	7892.32

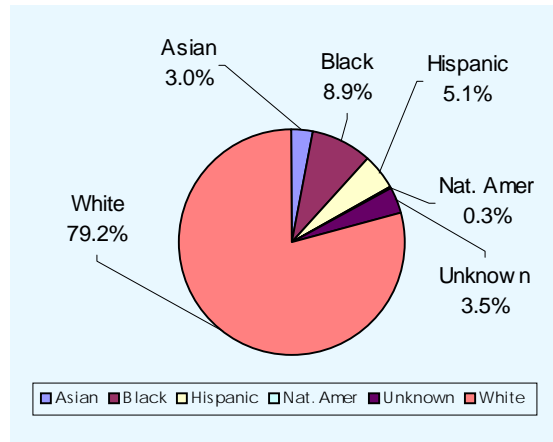
Total Headcount Enrollment by Major, Major 2, Coordinate Major - Fall 2003

Combine major1, major2 and elementary coordinate to reflect number of students serviced/housed by a specific department

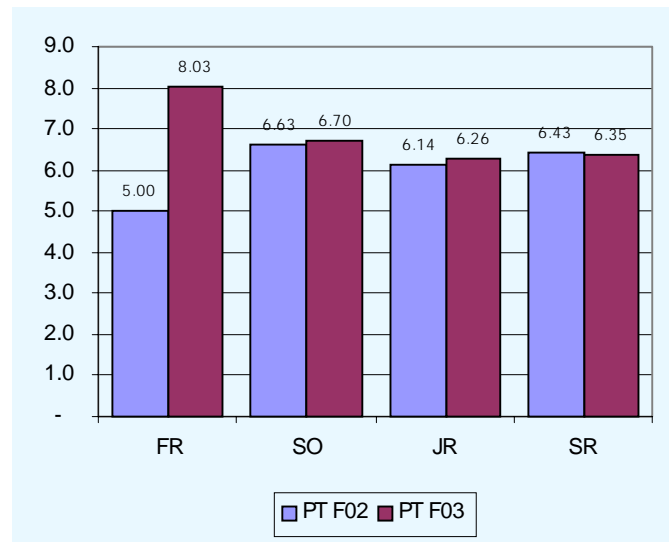
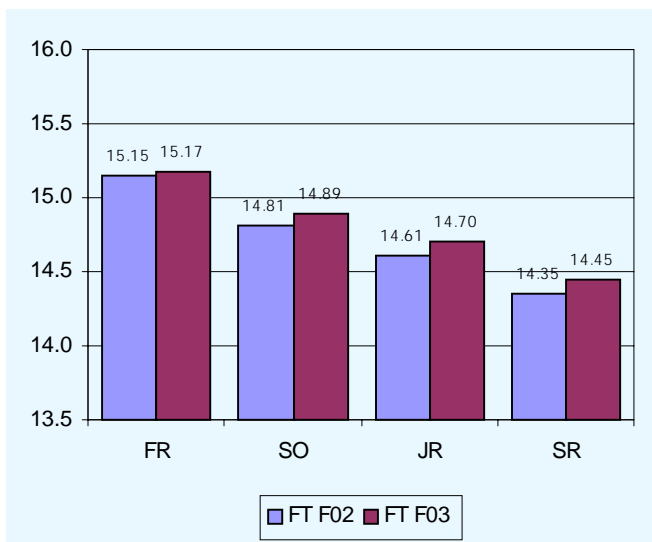
NOTE: "Elem Coord" figures include coordinates for both 0802 and 0803 majors; not all elementary education and collaborative education majors have coordinate majors on record.

				Major1	Major2	Elem Coord	Sec Ed								
				Major1	Major2	Elem Coord	Sec Ed	Major1	Major2	Elem Coord	Sec Ed				
ACCF	0503	BS	Accounting	197	4		4	CE	0908	BS	Civil Engineering	107			
ACCF	S502	BS	Accounting specialization	13				CHE	0906	BS	Chemical Engineering	90	1		
ACCF	S504	BS	Finance specialization	104	1		3	ECE	0919	BS	Electrical Engineering	135			1
MANG	S505	BS	Human Resource Mgt Spec	2				MECH	0910	BS	Mechanical Engineering	141			
MANG	S520	BS	MIS specialization	144	1		2	ENGN	G901	MS	Engineering	3			
MANG	S522	BS	Management specialization	221			6	ENGN	R906	MS	MS Engineering - Chemical	3			
MARK	S509	BS	Marketing specialization	220	2		3	ENGN	R908	MS	MS Engineering - Civil	2			
BUS	G501	MBA	Business Administration	65				ENGN	R909	MS	MS Engineering - Electrical	12			
BUS	0550	ND	Pre-MBA	35				ENGN	R910	MS	MS Engineering - Mechanical	6			
NODP	G998	Prob	Business probation	3				ENGN	R911	MS	MS Engineering - Environmental	1			
Business Total				1004	8	0	18	Engineering Total				500	1	0	1
COMM	0601	BA	Communication: no specialization	3		27		ART	1001	BA	Art	59	11		13
CORH	S608	BA	Writing Arts	34		26		ART	S001	BA	Art: Art Education specialization	77			39
COSD	S605	BA	Communication Studies	65	2		3	ART	S004	BA	Art: Illustration specialization	1			
JCWR	S602	BA	Journalism	107	1		3	ART	S011	BA	Art: Advertising Design	1			1
PBRL	S604	BA	Advertising	109	1		2	ART	S013	BA	Art: Fine Arts specialization	71			4
PBRL	S606	BA	Public Relations	140	3		4	MUS	1005	BA	Music	40		4	7
RTVF	S603	BA	Radio/TV/Film	347	7		8	THD	1007	BA	Speech/Theatre/Dance	12		6	2
CORH	G608	MA	Writing	36			4	THD	1008	BA	Theatre	3		2	
PBRL	G895	MA	Public Relations	40				THD	S077	BA	Theatre Arts specialization	59	3		11
NODP	G995	Prob	Communication: Probationary	10				THD	S079	BA	Child Drama specialization	9	27		1
Communication Total				891	14	53	24	ART	1003	BFA	Studio Art	38			7
EECE	0802	BA	Elementary Education	753			2	MUS	1004	BM	Music	2			1
HES	0836	BA	Health & Exercise Science	16			1	MUS	1006	BM	Music Education	40	1	2	34
HES	S834	BA	H/ES Teacher Certification	301	1		2	MUS	1011	BM	Music: Performance	21	1		5
HES	S838	BA	H/ES Athletic Training	71				MUS	1012	BM	Music: Composition	4	1		
HES	S839	BA	H/ES Health Promotion & Fitness	77	1			MUS	1013	BM	Music: Jazz Studies	9			1
INTR	0803	BA	Collaborative Teaching	108				MUS	S106	BM	Music Education specialization	19	1		5
SPED	0810	BA	Teacher of the Handicapped	263			4	MUS	S111	BM	Performance specialization	18			2
SPED	1201	BA	School Nursing	30				MUS	S112	BM	Theory/Composition specialization	2			
EECE	9802	Cert	Elementary Education Cert	29			2	MUS	S113	BM	Jazz Studies Specialization	5			1
HES	9837	Cert	Physical Education Cert	5				MUS	G006	MA	Music Education	2			
READ	9830	Cert	Reading Cert	1				THD	G007	MA	Theatre	10			
SEED	9001	Cert	Art Cert	4			3	MUS	G005	MM	Performance	13			
SEED	9005	Cert	Music Cert	2			2	Fine & Performing Arts Total				515	4	55	134
SEED	9201	Cert	Social Studies Cert	11			3	ECON	2204	BA	Economics	85	1	2	1
SEED	9400	Cert	Biological Science Cert	4			1	ENGL	1501	BA	English	264	1	110	113
SEED	9500	Cert	General Business Cert	14			8	GEAN	2206	BA	Geography	36	2	15	3
SEED	9501	Cert	English Cert	2				HIST	2205	BA	History	297	2	68	150
SEED	9701	Cert	Mathematics Cert	7			3	LANG	1105	BA	Spanish	69	1	31	29
SPED	9221	Cert	School Nurse Cert	50				LAWJ	2105	BA	Law/Justice	498	4		9
SPED	9810	Cert	Teacher of the Handicapped Cert	16				MATH	1701	BA	Mathematics	182	1	56	102
EECE	G113	COG	Computers in Education COG	4				PHRE	4933	BA	Liberal Studies - no specialization	1		2	
EECE	G804	COG	Early Childhood Education COG	5				PHRE	S485	BA	Math/Science specialization	19		54	7
EDLD	D928	EDD	Educational Leadership	44				PHRE	S490	BA	American Studies specialization	58		111	6
SPED	ES03	EDS	EDS: School Psychology	56				POSC	2207	BA	Political Science	89	1	3	3
EDLD	G807	MA	Higher Education	24				PSY	2000	BA	Psychology	262	3	114	22
EDLD	G827	MA	School Administration	133				PSY	S220	BA	Child Behavioral Services	16		1	
EDLD	G829	MA	Supervision-Curriculum Dev	8				SOC	2208	BA	Sociology	176	2	137	17
EDLD	G898	MA	School Business Administration	5				BISC	0400	BS	Biological Sciences	265	1	5	17
EECE	G801	MA	Elementary School Teaching	10				CHEM	1905	BS	Chemistry	43	1	1	4
READ	G830	MA	Reading Education	63				CHEM	1907	BS	Biochemistry	19			
SEED	G601	MA	School & Public Librarianship	44				CSCI	0701	BS	Computer Science	219	1	1	3
SEED	G831	MA	SMT - Art	1				MATH	1702	BS	Mathematics	11			4
SEED	G832	MA	SMT - Music (phased out)	3				PHYS	1901	BS	Physical Science	10	1	3	7
SEED	G833	MA	SMT - Mathematics	1				PHYS	1902	BS	Physics	30			5
SEED	G834	MA	SMT - Science	5				PHYS	S905	BS	Chemistry specialization	4			3
SPED	G809	MA	Special Education	32				PHYS	S918	BS	General Science spec.	2			1
SPED	G818	MA	Learning Disabilities	50				GEAN	A206	Cert	Cartography & Geological Info Sys	1			
SPED	G822	MA	School Psychology	34				BISC	G917	MA	Environmental Ed & Conservation	7			
SPED	G826	MA	Student Personnel Services	88				MATH	G701	MA	Mathematics	9			
TECH	G840	MA	Technology Education	9				PSY	G209	MA	Applied Psychology	28			
EECE	G800	MST	Elementary Education	5				LAS	G997	Prob	Arts & Sciences Probation	6			
EECE	G810	MST	Collaborative Teaching	21				Liberal Arts & Sciences Total				2706	22	714	506
SEED	G802	MST	Secondary Education	14				NODP	4999	ND	Undeclared undergraduate	862			34
SPED	G808	MST	Special Education	7				NODP	G000	ND	Graduate: Non-matriculated	301			
EDLD	G629	PCrt	Principal/Supervisor Prof Cert	20				NODP	G101	ND	Graduate: Pre-matriculated	58			
SEED	G600	PCrt	Assoc Ed Media Spec Prof Cert	3				NODP	G990	ND	Promising Scholars Program	3			
SEED	G603	PCrt	ESL/Bilingual Education Prof Cert	14				NODP	UND	ND	Non-matriculated undergraduate	324			2
SEED	G698	PCrt	School Business Admin Prof Cert	2				University Total				9667	51	822	750
SPED	G618	PCrt	Learning Disability Prof Cert	15				The numbers in red above ("Sec Ed") are included in the major1 counts.							
SPED	G626	PCrt	Student Personnel Serv Prof Cert	2				Example: 0400 Biological Science - Total majors housed=265+1+5 or 271.							
NODP	G999	Prob	Education Probationary	17				17 of the 271 students are enrolled also in secondary education.							
Education Total				2503	2	0	31								

Total Headcount Enrollment by Ethnic Category



Matriculated Undergraduate Headcount by Average Class Load (Full-Time and Part-Time)



For more information visit our web page at
<http://www.rowan.edu>.
 Our listing is under Professional and Academic Service -
 Institutional Research and Planning or contact Peg Soden
 at 256-4146 or soden@rowan.edu

Institutional Research and Planning
 Rowan University
 Bole Hall Annex
 Glassboro, New Jersey 08028
 (856) 256-4146