

# Research Brief

A publication from Rowan University's **Office of Institutional Research and Planning** to provide targeted information to the Rowan community

**September 2004**

**Volume FY 2005: Brief 1**

## Fall 2004 Enrollment

The Office of Institutional Research and Planning, in a continuing effort to improve the reporting of useful information in a timely manner, has changed some of the content of its Fall Enrollment *Research Brief*. The first change is in one of the definitions of full-time equivalent student (FTE). This change, labeled "IPEDSFTE" accommodates the comparison of Rowan to other institutions. A second change, on page two, includes the total FTE students serviced by each department. These figures are used to calculate the student:faculty ratio. The third change, on page three, combines all curriculum codes together in an academic department. The final change to this *Research Brief* is on page four. One graph displays the distribution of Rowan students by ethnic code. Two additional graphs show the change in average course load for matriculated undergraduates in **Fall 2003 and Fall 2004**. We hope these changes are useful. And, as always, your comments are appreciated.

### How do we calculate a full-time equivalent student (FTE)?

There are two common formulae used in the calculation of an FTE.

#### FTE definition 1:

The sum of undergraduate student credit hours divided by 15 plus the sum of graduate student credit hours divided by 12.

Example:

Undergraduate SCH		
	$112089.5/15=$	7472.63
GraduateSCH		
	$8285.5/12=$	690.46
Total FTE (7472.63 + 690.45) =		8163.09

#### FTE definition 2 (IPEDSFTE):

Used for mandatory federal reporting (i.e., IPEDS) and publications ranging from Baron's to U.S. News. The full-time headcount plus 1/3 of part-time headcount.

Example:

Full-time HC	=	7318
Part-time HC / 1 3 (2370/3)	=	790
Total FTE (6722+896)	=	8108

<b>Total Headcount</b>	<b>9688</b>
<b>SCH</b>	<b>120375.0</b>
<b>FTE (Definition 1)</b>	<b>8163.09</b>
<b>FTE (Definition 2)</b>	<b>8108.00</b>

#### Gender

Female	5622
Male	4066

<b>Courseload</b>	<b>SCH</b>	<b>Headcount</b>
-------------------	------------	------------------

<b>Undergraduate</b>		
Full-Time	104898.0	7087
Part-Time	7191.5	1296
<b>Undergrad Totals</b>	<b>112089.5</b>	<b>8383</b>

#### Graduate

Full-Time	3279.0	231
Part-Time	5006.5	1074
<b>Graduate Totals</b>	<b>8285.5</b>	<b>1305</b>

<b>University Totals</b>	<b>120375.0</b>	<b>9688</b>
--------------------------	-----------------	-------------

#### Ethnic Breakdown

Black	877	9.1%
American Indian/Native Alaskan	32	0.3%
Asian	315	3.3%
Hispanic	547	5.6%
White	7665	79.1%
Not Reported	252	2.6%

(continued on page 4)

## Total Semester Credit Hours by Student Level - Fall 2004

This table reflects the number of semester credit hours consumed by students based on the student's class level. For instance, the accounting department generated 2,626 credit hours for the Fall 2004 Semester. Of these 2,626 credit hours,

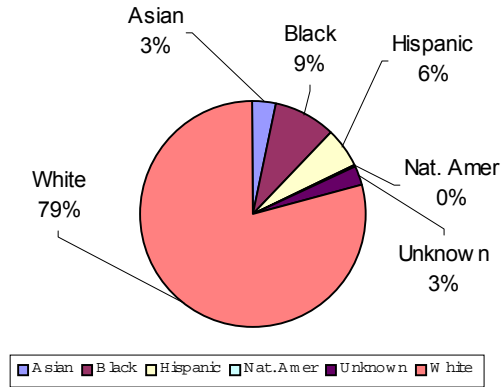
615 were consumed by freshman, sophomore, and non-matriculated students. A total of 1,921 were consumed by junior and senior students and the remainder by certification, post-bac, graduate and doctoral students.

	Lower Division	Upper Division	Total Undergrad	Post/Bacc & Cert	Graduate Certs	Graduate	TOTAL	FTE *
BUSACCF	615.0	1921.0	2536.0	30.0	0.0	60.0	2626.0	176.07
BUSMANG	750.0	3096.0	3846.0	12.0	0.0	399.0	4257.0	290.45
BUSMARK	420.0	1470.0	1890.0	30.0	0.0	0.0	1920.0	128.00
<b>Business</b>	<b>1785.0</b>	<b>6487.0</b>	<b>8272.0</b>	<b>72.0</b>	<b>0.0</b>	<b>459.0</b>	<b>8803.0</b>	<b>594.52</b>
COMMCORH	4932.0	611.0	5543.0	0.0	0.0	168.0	5711.0	383.53
COMMCOSD	2958.0	2400.0	5358.0	3.0	0.0	3.0	5364.0	357.65
COMMJCWR	264.0	1218.0	1482.0	0.0	0.0	120.0	1602.0	108.80
COMMPBRL	252.0	1209.0	1461.0	0.0	0.0	320.0	1781.0	124.07
COMMRTVF	486.0	1704.0	2190.0	0.0	0.0	0.0	2190.0	146.00
<b>Communication</b>	<b>8892.0</b>	<b>7142.0</b>	<b>16034.0</b>	<b>3.0</b>	<b>0.0</b>	<b>611.0</b>	<b>16648.0</b>	<b>1120.05</b>
EDEDLD	10.0	4.0	14.0	0.0	54.0	1130.0	1198.0	99.60
ED EECE	336.0	2983.0	3319.0	239.0	3.0	111.0	3672.0	246.70
ED HES	2253.0	4236.0	6489.0	103.0	0.0	0.0	6592.0	439.47
ED READ	582.0	1426.0	2008.0	33.0	0.0	234.0	2275.0	155.57
ED SEED	1499.0	2420.0	3919.0	501.0	87.0	1259.0	5766.0	406.83
ED SPED	145.0	1883.0	2028.0	199.0	75.0	1508.0	3810.0	280.38
<b>Education</b>	<b>4825.0</b>	<b>12952.0</b>	<b>17777.0</b>	<b>1075.0</b>	<b>219.0</b>	<b>4242.0</b>	<b>23313.0</b>	<b>1628.55</b>
ENGN CE	3.0	471.0	474.0	0.0	0.0	37.0	511.0	34.68
ENGN CHE	56.0	287.0	343.0	0.0	0.0	51.0	394.0	27.12
ENGN ECE	142.0	539.0	681.0	0.0	0.0	111.0	792.0	54.65
ENGN no dept	894.0	610.0	1504.0	0.0	0.0	73.0	1577.0	106.35
ENGNMECH	6.0	497.0	503.0	0.0	0.0	96.0	599.0	41.53
<b>Engineering</b>	<b>1101.0</b>	<b>2404.0</b>	<b>3505.0</b>	<b>0.0</b>	<b>0.0</b>	<b>368.0</b>	<b>3873.0</b>	<b>264.33</b>
FPA ART	1449.0	1916.5	3365.5	6.0	0.0	6.0	3377.5	225.27
FPA MUS	1855.5	846.5	2702.0	30.5	0.0	141.0	2873.5	193.92
FPA THD	1216.0	1032.5	2248.5	0.0	0.0	48.0	2296.5	153.90
<b>Fine &amp; Perf Arts</b>	<b>4520.5</b>	<b>3795.5</b>	<b>8316.0</b>	<b>36.5</b>	<b>0.0</b>	<b>195.0</b>	<b>8547.5</b>	<b>573.08</b>
LAS BISC	1308.0	1921.0	3229.0	0.0	0.0	13.0	3242.0	216.35
LAS CHEM	1517.0	763.0	2280.0	0.0	0.0	0.0	2280.0	152.00
LAS CSCI	1465.0	1689.0	3154.0	0.0	0.0	0.0	3154.0	210.27
LAS ECON	1614.0	939.0	2553.0	9.0	0.0	0.0	2562.0	170.80
LAS ENGL	1629.0	3252.0	4881.0	18.0	0.0	3.0	4902.0	326.85
LAS GEAN	1415.0	1410.0	2825.0	3.0	0.0	9.0	2837.0	189.28
LAS HIST	2109.0	2247.0	4356.0	12.0	0.0	0.0	4368.0	291.20
LAS LANG	1089.0	1302.0	2391.0	3.0	0.0	18.0	2412.0	161.10
LAS LAWJ	1113.0	2034.0	3147.0	0.0	0.0	0.0	3147.0	209.80
LAS MATH	6252.0	2718.0	8970.0	16.0	0.0	93.0	9079.0	606.82
LAS PHRE	1515.0	1581.0	3096.0	3.0	0.0	0.0	3099.0	206.60
LAS PHYS	1364.0	1093.0	2457.0	0.0	0.0	10.0	2467.0	164.63
LAS POSC	1227.0	1176.0	2403.0	3.0	0.0	0.0	2406.0	160.40
LAS PSY	3073.0	3767.0	6840.0	36.0	21.0	732.0	7629.0	521.15
LAS SOC	1908.0	2661.0	4569.0	3.0	0.0	0.0	4572.0	304.80
<b>Liberal Arts &amp; Sci</b>	<b>28709.0</b>	<b>28823.0</b>	<b>57532.0</b>	<b>106.0</b>	<b>21.0</b>	<b>878.0</b>	<b>58537.0</b>	<b>3917.45</b>
NCHONR	179.0	111.0	290.0	0.0	0.0	0.0	290.0	19.33
NCINTR	163.0	162.0	325.0	0.0	0.0	0.0	325.0	21.67
NCINTR	27.0	12.0	39.0	0.0	0.0	0.0	39.0	2.60
<b>University Total</b>	<b>50201.5</b>	<b>61888.5</b>	<b>112090.0</b>	<b>1292.5</b>	<b>240.0</b>	<b>6753.0</b>	<b>120375.5</b>	<b>8141.58</b>

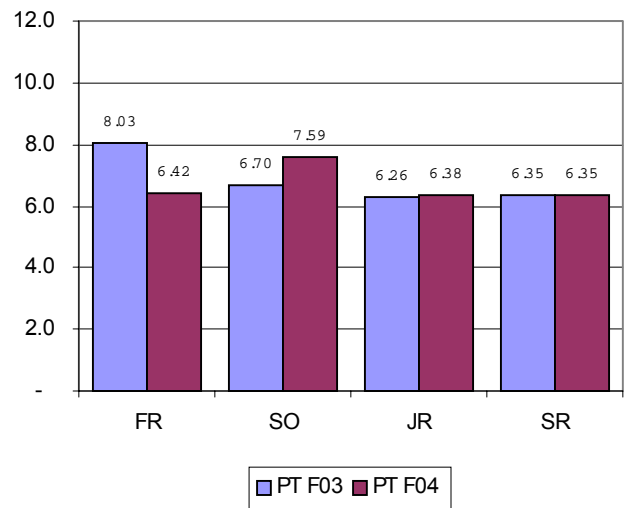
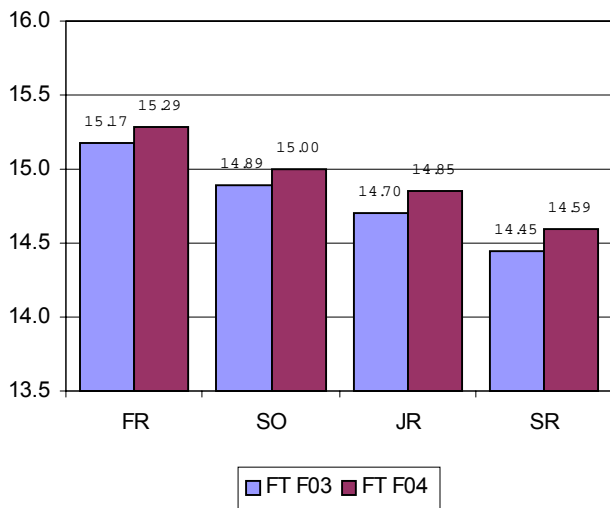
\* FTE formula: undergraduate SCH/ 15 + graduate sch/ 12



### Total Headcount Enrollment by Ethnic Category



### Matriculated Undergraduate Headcount by Average Class Load (Full-Time and Part-Time)



For more information visit our web page at  
<http://www.rowan.edu>.  
 Our listing is under Professional and Academic Service -  
 Institutional Research and Planning or contact Peg Soden  
 at 256-4146 or [soden@rowan.edu](mailto:soden@rowan.edu)

Institutional Research and Planning  
 Rowan University  
 Bole Hall Annex  
 Glassboro, New Jersey 08028  
 (856) 256-4146