

Research Brief

A publication from Rowan University's **Office of Institutional Research and Planning** to provide targeted information to the Rowan community

February 2004

Volume FY 2004: Brief 3

Spring 2004 Enrollment

The Office of Institutional Research and Planning, in a continuing effort to improve the reporting of useful information in a timely manner, has changed some of the content of its Fall Enrollment *Research Brief*. The first change is in one of the definitions of full-time equivalent student (FTE). This change, labeled "IPEDS FTE" accommodates the comparison of Rowan to other institutions. A second change, on page two, includes the total FTE students serviced by each department. These figures are used to calculate the student:faculty ratio. The third change, on page three, combines all curriculum codes together in an academic department. The final change to this *Research Brief* is on page four. One graph displays the distribution of Rowan students by ethnic code. Two additional graphs show the change in average course load for matriculated undergraduates in Spring 2003 and Spring 2004. We hope these changes are useful. And, as always, your comments are appreciated.

How do we calculate a full-time equivalent student (FTE)?

There are two common formulae used in the calculation of an FTE.

FTE definition 1:

The sum of undergraduate student credit hours divided by 15 plus the sum of graduate student credit hours divided by 12.

Example:

| | | |
|-------------------------------|----------|--|
| Undergraduate SCH | | |
| 104,399.5/15= | 6,959.97 | |
| GraduateSCH | | |
| 7,289.0/12= | 607.42 | |
| Total FTE (6,959.97+607.42) = | 7,567.38 | |

FTE definition 2 (IPEDSFTE):

Used for mandatory federal reporting (i.e., IPEDS) and publications ranging from Baron's to U.S. News. The full-time headcount plus 1/3 of part-time headcount.

Example:

| | | |
|-----------------------------|---|------|
| Full-time HC | = | 6722 |
| Part-time HC / 1 3 (2688/3) | = | 896 |
| Total FTE (6722+896) | = | 7618 |

| | |
|---------------------------|-----------------|
| Total Headcount | 9410 |
| SCH | 111688.5 |
| FTE (Definition 1) | 7567.38 |
| FTE (Definition 2) | 7618.00 |

Gender

| | |
|--------|------|
| Female | 5583 |
| Male | 3827 |

| | SCH | Headcount |
|-------------------------|-----------------|------------------|
| Courseload | | |
| Undergraduate | | |
| Full-Time | 95533.5 | 6490 |
| Part-Time | 8866.0 | 1488 |
| Undergrad Totals | 104399.5 | 7978 |

Graduate

| | | |
|------------------------|---------------|-------------|
| Full-Time | 2528.0 | 232 |
| Part-Time | 4761.0 | 1200 |
| Graduate Totals | 7289.0 | 1432 |

| | | |
|--------------------------|-----------------|-------------|
| University Totals | 111688.5 | 9410 |
|--------------------------|-----------------|-------------|

Ethnic Breakdown

| | | |
|--------------------------------|------|--------------|
| Black | 845 | 9% |
| American Indian/Native Alaskan | 32 | less than 1% |
| Asian | 291 | 3% |
| Hispanic | 480 | 5% |
| White | 7454 | 79% |
| Not Reported | 308 | 3% |

(continued on page 4)

Total Semester Credit Hours by Student Level - Spring 2004

This table reflects the number of semester credit hours consumed by students based on the student's class level. For instance, the accounting department generated 2,670 credit hours for the Spring 2004 Semester. Of these 2,670 credit

hours, 462 were consumed by freshman, sophomore, and non-matriculated students. A total of 2,082 were consumed by junior and senior students and the remainder by certification, post-bac, graduate and doctoral students.

| | Lower Division | Upper Division | Total Undergrad | Post/Bacc & Cert | Graduate Certs | Graduate | TOTAL | FTE * |
|-------------------------------|-------------------|-------------------|--------------------|---------------------|-------------------|---------------|-----------------|----------------|
| BUS ACCF | 462.0 | 2082.0 | 2544.0 | 45.0 | 0.0 | 81.0 | 2670.0 | 179.35 |
| BUS no dept | 0.0 | 3.0 | 3.0 | 0.0 | 0.0 | 126.0 | 129.0 | 10.70 |
| BUS MANG | 477.0 | 3303.0 | 3780.0 | 21.0 | 0.0 | 81.0 | 3882.0 | 260.15 |
| BUS MARK | 462.0 | 1254.0 | 1716.0 | 21.0 | 0.0 | 129.0 | 1866.0 | 126.55 |
| Business | 1401.0 | 6642.0 | 8043.0 | 87.0 | 0.0 | 417.0 | 8547.0 | 576.75 |
| COMM CORH | 3709.0 | 571.0 | 4280.0 | 0.0 | 0.0 | 183.0 | 4463.0 | 300.58 |
| COMM COSD | 1674.0 | 2730.0 | 4404.0 | 0.0 | 0.0 | 0.0 | 4404.0 | 293.60 |
| COMM JCWR | 270.0 | 1191.0 | 1461.0 | 3.0 | 0.0 | 108.0 | 1572.0 | 106.60 |
| COMM PBRL | 324.0 | 1089.5 | 1413.5 | 0.0 | 0.0 | 413.0 | 1826.5 | 128.65 |
| COMM RTVF | 474.0 | 1737.0 | 2211.0 | 0.0 | 0.0 | 0.0 | 2211.0 | 147.40 |
| Communication | 6451.0 | 7318.5 | 13769.5 | 3.0 | 0.0 | 704.0 | 14476.5 | 976.83 |
| ED EDLD | 3.0 | 18.0 | 21.0 | 0.0 | 54.0 | 1305.0 | 1380.0 | 114.65 |
| ED EECE | 393.0 | 2194.0 | 2587.0 | 208.0 | 31.0 | 214.0 | 3040.0 | 206.75 |
| ED HES | 1855.0 | 4045.0 | 5900.0 | 79.0 | 42.0 | 36.0 | 6057.0 | 405.10 |
| ED READ | 297.0 | 1074.0 | 1371.0 | 120.0 | 9.0 | 354.0 | 1854.0 | 129.65 |
| ED SEED | 1228.0 | 1876.0 | 3104.0 | 312.0 | 115.0 | 1022.0 | 4553.0 | 322.48 |
| ED SPED | 240.0 | 1864.0 | 2104.0 | 288.0 | 51.0 | 1509.0 | 3952.0 | 289.47 |
| Education | 4016.0 | 11071.0 | 15087.0 | 1007.0 | 302.0 | 4440.0 | 20836.0 | 1468.10 |
| ENGN CE | 63.0 | 349.0 | 412.0 | 0.0 | 0.0 | 21.0 | 433.0 | 29.22 |
| ENGN CHE | 18.0 | 444.0 | 462.0 | 0.0 | 0.0 | 36.0 | 498.0 | 33.80 |
| ENGN ECE | 106.0 | 555.0 | 661.0 | 0.0 | 0.0 | 87.0 | 748.0 | 51.32 |
| ENGN no dept | 769.0 | 710.0 | 1479.0 | 0.0 | 0.0 | 88.0 | 1567.0 | 105.93 |
| ENGN MECH | 44.0 | 443.0 | 487.0 | 0.0 | 0.0 | 36.0 | 523.0 | 35.47 |
| Engineering | 1000.0 | 2501.0 | 3501.0 | 0.0 | 0.0 | 268.0 | 3769.0 | 255.73 |
| FPA ART | 1209.0 | 1936.5 | 3145.5 | 7.5 | 0.0 | 0.0 | 3153.0 | 210.20 |
| FPA MUS | 1227.0 | 964.0 | 2191.0 | 11.5 | 0.0 | 140.0 | 2342.5 | 158.50 |
| FPA THD | 1170.0 | 1225.5 | 2395.5 | 0.0 | 0.0 | 57.0 | 2452.5 | 164.45 |
| Fine & Perf Arts | 3606.0 | 4126.0 | 7732.0 | 19.0 | 0.0 | 197.0 | 7948.0 | 533.15 |
| LAS BISC | 871.0 | 1990.0 | 2861.0 | 6.0 | 0.0 | 6.0 | 2873.0 | 191.63 |
| LAS CHEM | 751.0 | 855.0 | 1606.0 | 0.0 | 0.0 | 15.0 | 1621.0 | 108.32 |
| LAS CSCI | 1694.0 | 1792.0 | 3486.0 | 0.0 | 0.0 | 0.0 | 3486.0 | 232.40 |
| LAS ECON | 1284.0 | 867.0 | 2151.0 | 39.0 | 0.0 | 0.0 | 2190.0 | 146.00 |
| LAS ENGL | 1005.0 | 3078.0 | 4083.0 | 0.0 | 0.0 | 9.0 | 4092.0 | 272.95 |
| LAS GEAN | 1374.0 | 1602.0 | 2976.0 | 15.0 | 0.0 | 6.0 | 2997.0 | 199.90 |
| LAS HIST | 2025.0 | 2229.0 | 4254.0 | 0.0 | 0.0 | 0.0 | 4254.0 | 283.60 |
| LAS LANG | 1152.0 | 1053.0 | 2205.0 | 0.0 | 0.0 | 6.0 | 2211.0 | 147.50 |
| LAS LAWJ | 1275.0 | 2505.0 | 3780.0 | 0.0 | 0.0 | 0.0 | 3780.0 | 252.00 |
| LAS MATH | 5086.0 | 2738.0 | 7824.0 | 28.0 | 0.0 | 78.0 | 7930.0 | 529.97 |
| LAS PHRE | 996.0 | 1692.0 | 2688.0 | 0.0 | 0.0 | 0.0 | 2688.0 | 179.20 |
| LAS PHYS | 1088.0 | 1443.0 | 2531.0 | 10.0 | 0.0 | 4.0 | 2545.0 | 169.73 |
| LAS POSC | 1191.0 | 1242.0 | 2433.0 | 6.0 | 0.0 | 3.0 | 2442.0 | 162.85 |
| LAS PSY | 2788.0 | 3506.0 | 6294.0 | 18.0 | 18.0 | 798.0 | 7128.0 | 488.80 |
| LAS SOC | 1749.0 | 2898.0 | 4647.0 | 0.0 | 0.0 | 0.0 | 4647.0 | 309.80 |
| Liberal Arts & Sci | 24329.0 | 29490.0 | 53819.0 | 122.0 | 18.0 | 925.0 | 54884.0 | 3674.65 |
| NCHONR | 124.0 | 69.0 | 193.0 | 0.0 | 0.0 | 0.0 | 193.0 | 12.87 |
| NCINTR | 338.0 | 676.0 | 1014.0 | 3.0 | 0.0 | 18.0 | 1035.0 | 69.30 |
| University Total | 41265.0 | 61893.5 | 103158.5 | 1241.0 | 320.0 | 6969.0 | 111688.5 | 7567.38 |

* FTE formula: undergraduate SCH/ 15 + graduate sch/ 12

Total Headcount Enrollment by Major, Major 2, Coordinate Major - Spring 2004

Combine major1, major2 and elementary coordinate to reflect number of students serviced/housed by a specific department

NOTE: "Elem Coord" figures include coordinates for both 0802 and 0803 majors; not all elementary education and collaborative education majors have coordinate majors on record.

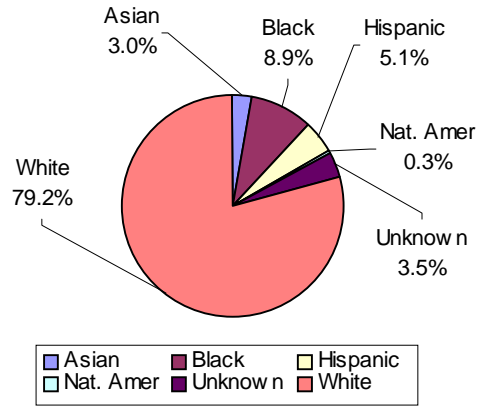
| | | | | Elem Sec | | | | | | | | Elem Sec | | | |
|------|------|------|----------------------------------|-------------|-----------|-----------|-----------|------|------|------|--|-------------|------------|------------|------------|
| | | | | Major1 | Major2 | Coord | Ed | | | | | Major1 | Major2 | Coord | Ed |
| ACCF | 0503 | BS | Accounting | 204 | 5 | | 4 | CE | 0908 | BS | Civil Engineering | 106 | 1 | | |
| ACCF | S504 | BS | Finance specialization | 111 | 1 | | 3 | CHE | 0906 | BS | Chemical Engineering | 86 | | | |
| BUS | 0501 | BS | Business: no specialization | 12 | | | | ECE | 0919 | BS | Electrical Engineering | 123 | | | |
| BUS | 0507 | BS | Entrepreneurship specialization | 4 | | | | MECH | 0910 | BS | Mechanical Engineering | 141 | | | 1 |
| MANG | S505 | BS | Human Resource Mgt spec | 12 | 1 | | | ENGN | G901 | MS | Engineering | 27 | | | |
| MANG | S520 | BS | MIS specialization | 150 | | | 3 | ENGN | G996 | Prob | Probationary Engineering | 4 | | | |
| MANG | S522 | BS | Management specialization | 196 | 1 | | 5 | | | | Engineering Total | 487 | 1 | 0 | 1 |
| MARK | S509 | BS | Marketing specialization | 215 | 3 | | 4 | ART | 1001 | BA | Art | 51 | 10 | | 8 |
| BUS | G501 | MBA | Business Administration | 68 | | | | ART | S001 | BA | Art: Art Education specialization | 78 | | | 46 |
| BUS | 0550 | ND | Pre-MBA | 30 | | | | ART | S013 | BA | Art: Fine Arts specialization | 64 | | | 7 |
| NODP | G998 | Prob | Business probation | 3 | | | | MUS | 1005 | BA | Music | 32 | | | 15 |
| | | | Business Total | 1005 | 11 | 0 | 19 | THD | S077 | BA | Theatre Arts specialization | 70 | 1 | | 11 |
| CORH | S608 | BA | Writing Arts | 37 | | 56 | 4 | THD | S079 | BA | Child Drama specialization | 11 | 36 | | 3 |
| COSD | S605 | BA | Communication Studies | 60 | | | | ART | 1003 | BFA | Studio Art | 42 | | | 6 |
| JCWR | S602 | BA | Journalism | 102 | 1 | | 3 | MUS | 1106 | BM | Music Education specialization | 56 | 1 | 2 | 37 |
| PBRL | S604 | BA | Advertising | 114 | 1 | 1 | | MUS | 1112 | BM | Theory/Composition specialization | 5 | 1 | | |
| PBRL | S606 | BA | Public Relations | 142 | 2 | | 1 | MUS | 1113 | BM | Jazz Studies specialization | 12 | | | 2 |
| RTVF | S603 | BA | Radio/TV/Film | 335 | | | 6 | MUS | 1114 | BM | Performance specialization | 36 | 3 | | 9 |
| CORH | G608 | MA | Writing | 40 | | | | MUS | G006 | MA | Music Education | 4 | | | |
| PBRL | G895 | MA | Public Relations | 47 | | | | THD | G007 | MA | Theatre | 10 | | | |
| NODP | G995 | Prob | Communication: Probationary | 10 | | | | MUS | G005 | MM | Performance | 17 | | | |
| | | | Communication Total | 887 | 4 | 57 | 14 | | | | Fine & Performing Arts Total | 488 | 5 | 52 | 144 |
| EECE | 0801 | BA | Elem Ed Erly Chd/Spec. Ed. spec | 2 | | | | ECON | 2204 | BA | Economics | 87 | | 1 | 2 |
| EECE | 0802 | BA | Elementary Education | 714 | | | | ENGL | 1501 | BA | English | 286 | 2 | 105 | 109 |
| HES | S834 | BA | H/ES Teacher Certification | 308 | 1 | | 6 | GEAN | 2206 | BA | Geography | 39 | | 15 | 4 |
| HES | S838 | BA | H/ES Athletic Training | 67 | | | | HIST | 2205 | BA | History | 306 | 2 | 68 | 149 |
| HES | S839 | BA | H/ES Health Promotion & Fitness | 78 | | | | LANG | 1105 | BA | Spanish | 74 | 2 | 30 | 29 |
| INTR | 0803 | BA | Collaborative Teaching | 104 | | | | LAWJ | 2105 | BA | Law/Justice | 485 | 4 | | 10 |
| SPED | 0810 | BA | Teacher of the Handicapped | 217 | | | 10 | MATH | 1701 | BA | Mathematics | 178 | | 58 | 90 |
| SPED | 1201 | BA | School Nursing | 24 | | | | PHRE | 4933 | BA | Liberal Studies - no specialization | 0 | | 1 | |
| EECE | 9802 | Cert | Elementary Education Cert | 30 | | | | PHRE | S485 | BA | Math/Science specialization | 25 | | 63 | 5 |
| HES | 9837 | Cert | Physical Education Cert | 7 | | | 1 | PHRE | S490 | BA | American Studies specialization | 62 | 75 | 33 | 7 |
| READ | 9830 | Cert | Reading Cert | 6 | 1 | | | POSC | 2207 | BA | Political Science | 84 | | 3 | |
| SEED | 9001 | Cert | Art Cert | 3 | | | 3 | PSY | 2000 | BA | Psychology | 239 | 4 | 95 | 17 |
| SEED | 9005 | Cert | Music Cert | 2 | | | 1 | PSY | S220 | BA | Child Behavioral Services | 26 | | 1 | 2 |
| SEED | 9201 | Cert | Social Studies Cert | 7 | | | 6 | SOC | 2208 | BA | Sociology | 206 | 2 | 111 | 19 |
| SEED | 9400 | Cert | Biological Science Cert | 2 | | | 2 | BISC | 0400 | BS | Biological Sciences | 269 | 1 | 5 | 18 |
| SEED | 9500 | Cert | General Business Cert | 21 | | | 15 | CHEM | 1905 | BS | Chemistry | 34 | 1 | | 5 |
| SEED | 9501 | Cert | English Cert | 2 | | | 2 | CHEM | 1906 | BS | Chemistry specialization | 14 | | 1 | 8 |
| SEED | 9701 | Cert | Mathematics Cert | 4 | | | 3 | CHEM | 1907 | BS | Biochemistry | 20 | | | 1 |
| SEED | 9901 | Cert | Physical Science Cert | 1 | | | | CSCI | 0701 | BS | Computer Science | 201 | 1 | | 3 |
| SPED | 9221 | Cert | School Nurse Cert | 40 | | | | CSCI | S701 | BS | Numerical/Scientific Comp spec | 1 | | | |
| SPED | 9810 | Cert | Teacher of the Handicapped Cert | 25 | | | | MATH | 1702 | BS | Mathematics | 8 | | | 3 |
| EECE | G113 | COG | Computers in Education COG | 4 | | | | PHYS | 1901 | BS | Physical Science | 4 | | | 1 |
| EECE | G804 | COG | Early Childhood Education COG | 4 | | | | PHYS | 1902 | BS | Physics | 32 | | | 7 |
| EDLD | D928 | EDD | Educational Leadership | 47 | | | | PHYS | 1918 | BS | Phys Sci.-General Science spec. | 3 | | | 1 |
| SPED | ES03 | EDS | EDS: School Psychology | 55 | | | | GEAN | A206 | Cert | Cartography & Geological Info Sys | 1 | | | |
| EDLD | G807 | MA | Higher Education | 28 | | | | MATH | G701 | MA | Mathematics | 8 | | | |
| EDLD | G827 | MA | School Administration | 148 | | | | PSY | G209 | MA | Applied Psychology | 29 | | | |
| EDLD | G829 | MA | Supervision-Curriculum Dev | 6 | | | | LAS | G997 | Prob | Arts & Sciences Probation | 7 | | | |
| EDLD | G898 | MA | School Business Administration | 6 | | | | | | | Liberal Arts & Sciences Total | 2728 | 94 | 590 | 490 |
| EECE | G801 | MA | Elementary School Teaching | 12 | | | | NODP | 4999 | ND | Undeclared undergraduate | 727 | | | 37 |
| READ | G830 | MA | Reading Education | 61 | | | | NODP | G000 | ND | Graduate: Non-matriculated | 297 | | | |
| SEED | G601 | MA | School & Public Librarianship | 40 | | | | NODP | G101 | ND | Graduate: Pre-matriculated | 65 | | | |
| SEED | G833 | MA | SMT - Mathematics | 2 | | | | NODP | G990 | ND | Promising Scholars Program | 1 | | | |
| SEED | G834 | MA | SMT - Science | 4 | | | | NODP | UND | ND | Non-matriculated undergrad. | 266 | | | 2 |
| SEED | G917 | MA | Environmental Ed & Conserv | 9 | | | | | | | University Total | 9410 | 117 | 699 | 756 |
| SPED | G809 | MA | Special Education | 32 | | | | | | | | | | | |
| SPED | G818 | MA | Learning Disabilities | 50 | | | | | | | | | | | |
| SPED | G822 | MA | School Psychology | 46 | | | | | | | | | | | |
| SPED | G826 | MA | Student Personnel Services | 92 | | | | | | | | | | | |
| TECH | G840 | MA | Technology Education | 13 | | | | | | | | | | | |
| EECE | G800 | MST | Elementary Education | 5 | | | | | | | | | | | |
| EECE | G810 | MST | Collaborative Teaching | 21 | | | | | | | | | | | |
| SEED | G802 | MST | Secondary Education | 13 | | | | | | | | | | | |
| SPED | G808 | MST | Special Education | 7 | | | | | | | | | | | |
| EDLD | G629 | PCrt | Principal/Supervisor Prof Cert | 19 | | | | | | | | | | | |
| HES | G637 | PCrt | Substance Aware. Coord. Prof. | 17 | | | | | | | | | | | |
| SEED | G600 | PCrt | Assoc Ed Media Spec. Prof. Cert. | 6 | | | | | | | | | | | |
| SEED | G603 | PCrt | ESL/Bilingual Educ. Prof Cert | 20 | | | | | | | | | | | |
| SEED | G698 | PCrt | School Business Admin Prof Cert | 1 | | | | | | | | | | | |
| SEED | G001 | PCrt | School Psychology Prof. Cert. | 1 | | | | | | | | | | | |
| SPED | G618 | PCrt | Learning Disability Prof Cert | 13 | | | | | | | | | | | |
| NODP | G999 | Prob | Education Probationary | 13 | | | | | | | | | | | |
| | | | Education Total | 2459 | 2 | 0 | 49 | | | | | | | | |

The numbers in red above ("Sec Ed") are included in the major1 counts.

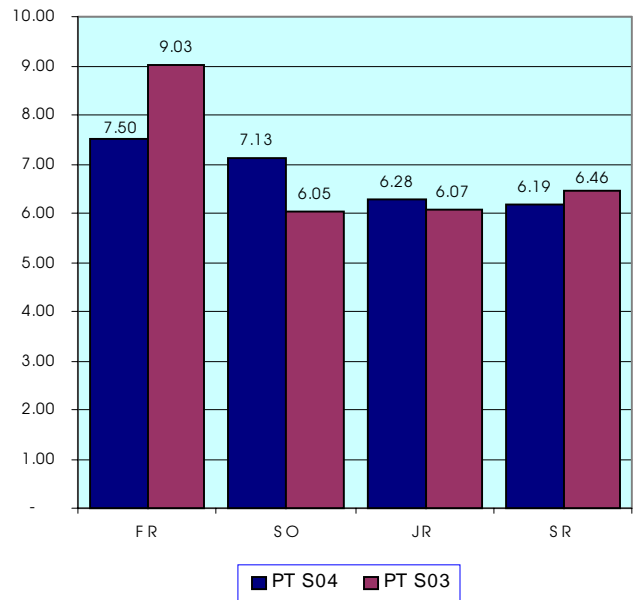
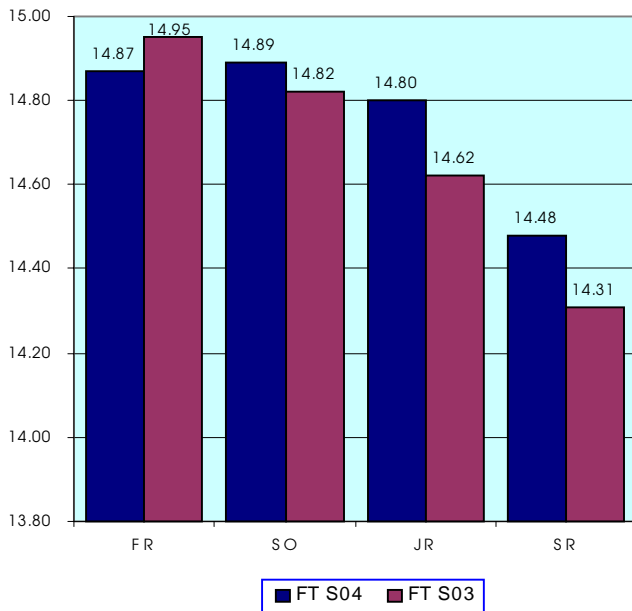
Example: 0400 Biological Science - Total majors housed=269+1+5 or 275.

18 of the 275 students are enrolled also in secondary education.

Total Headcount Enrollment by Ethnic Category



Matriculated Undergraduate Headcount by Average Class Load (Full-Time and Part-Time)



For more information visit our web page at
<http://www.rowan.edu>.
 Our listing is under Professional and Academic Service -
 Institutional Research and Planning or contact Peg Soden
 at 256-4146 or soden@rowan.edu

Institutional Research and Planning
 Rowan University
 Bole Hall Annex
 Glassboro, New Jersey 08028
 (856) 256-4146