

Research Brief

A publication from Rowan University's **Office of Institutional Research and Planning**
to provide targeted information to the Rowan community

September 2005

Volume FY 2006: Brief 1

Fall 2005 Enrollment Data

This Research Brief contains a snapshot of Fall 2005 enrollment and student credit hours as of the 10th day of class. This page summarizes enrollment by FTE, gender, ethnic category, and courseload. Page 2 displays student credit hour production by department and by student level. Page 3 lists enrollment by major within department. Page 4 contains average class load for matriculated undergraduates.

Full-Time Equivalent Student (FTE)

There are two common formulae used in the calculation of an FTE.

FTE -Definition 1: The sum of undergraduate student credit hours divided by 15 plus the sum of graduate student credit hours divided by 12.

Undergraduate SCH (NU,FR,SO,JR,SR,PB,CR) Graduate SCH (NG,CG,GR,DR)
115,636.50/15 = 7,709.10 6719.50/12 = 559.96

Total FTE =(7,709.10 + 559.96) = **8,269.06**

FTE -Definition 2 (IPEDS FTE): The full-time headcount plus 1/3 of part-time head-count.

Full-time HC = 7,487 Part-time HC/3 = (2,275/3) = 758.33

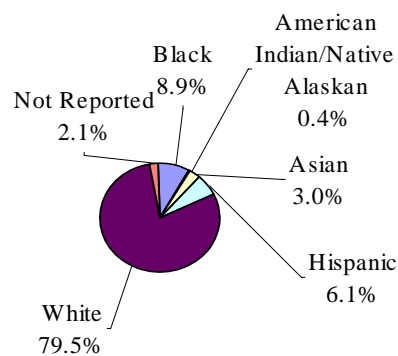
Total FTE = (7,487+758.33)= **8,245.33**

Demographics

Gender

Female	5,591	57.3%
Male	4,170	42.7%
Not Reported	1	0.0%
Total	9,762	100.0%

Race/Ethnicity



Black	871	8.9%
Am Indian/Native Alaskan	35	0.4%
Asian	292	3.0%
Hispanic	595	6.1%
White	7,765	79.5%
Not Reported	204	2.1%
Total	9,762	100.0%

Courseload	SCH	Headcount
Undergraduate		
Full-Time	108,208.5	7,283
Part-Time	7,428.0	1,201
Total	115,636.5	8,484
Graduate		
Full-Time	2,265.0	204
Part-Time	4,454.5	1,074
Total	6,719.5	1,278
University Total	122,356.0	9,762

Total Semester Credit Hours by Student Level - Fall 2005

This table reflects the number of semester credit hours consumed by students based on the student's class level. For instance, the accounting department generated 3,054 credit hours for the Fall 2005 Semester. Of these 3,054 credit hours, 672 were consumed by

freshman, sophomore, and non-matriculated students; 2,256 were consumed by junior and senior students; 42 were consumed by post-bac students; and 84 were consumed by graduate students.

	Lower Division	Upper Division	Total Undergraduate	Post-Bacc & Cert	Graduate Certs	Graduate	Total	FTE*
ACCF	672.0	2256.0	2928.0	42.0	0.0	84.0	3054.0	205.00
MANG	651.0	2877.0	3528.0	9.0	0.0	349.5	3886.5	264.93
MARK	444.0	1377.0	1821.0	12.0	0.0	0.0	1833.0	122.20
Business	1767.0	6510.0	8277.0	63.0	0.0	433.5	8773.5	592.13
COSD	2823.0	2487.0	5310.0	0.0	0.0	0.0	5310.0	354.00
JOUR	219.0	1059.0	1278.0	0.0	0.0	0.0	1278.0	85.20
PBRL	375.0	1392.0	1767.0	0.0	0.0	291.0	2058.0	142.05
RTVF	417.0	1860.0	2277.0	0.0	0.0	0.0	2277.0	151.80
WRAR	4819.0	1347.0	6166.0	6.0	0.0	265.0	6437.0	433.55
Communication	8653.0	8145.0	16798.0	6.0	0.0	556.0	17360.0	1166.60
EDLD	10.0	8.0	18.0	0.0	45.0	1096.0	1159.0	96.28
EECE	93.0	2297.0	2390.0	141.0	9.0	91.0	2631.0	177.07
HES	2095.0	4136.0	6231.0	72.0	0.0	0.0	6303.0	420.20
READ	811.0	1120.0	1931.0	51.0	6.0	234.0	2222.0	152.13
SEED	2170.0	3070.0	5240.0	546.0	104.0	1017.0	6907.0	479.15
SPED	633.0	1830.0	2463.0	261.0	72.0	1599.0	4395.0	320.85
Education	5812.0	12461.0	18273.0	1071.0	236.0	4037.0	23617.0	1645.68
CE	6.0	563.0	569.0	0.0	0.0	57.0	626.0	42.68
CHE	62.0	281.0	343.0	0.0	0.0	108.0	451.0	31.87
ECE	101.0	579.0	680.0	0.0	0.0	105.0	785.0	54.08
ENGN	934.0	659.0	1593.0	0.0	0.0	98.0	1691.0	114.37
MECH	6.0	460.0	466.0	0.0	0.0	45.0	511.0	34.82
Engineering	1109.0	2542.0	3651.0	0.0	0.0	413.0	4064.0	277.82
ART	1353.0	2013.0	3366.0	21.0	0.0	9.0	3396.0	226.55
MUS	1527.5	1092.0	2619.5	43.0	0.0	97.0	2759.5	185.58
THD	1088.5	1064.5	2153.0	0.0	0.0	18.0	2171.0	145.03
Fine & Perf Arts	3969.0	4169.5	8138.5	64.0	0.0	124.0	8326.5	557.17
BISC	1395.0	1990.0	3385.0	0.0	0.0	7.0	3392.0	226.25
CHEM	1587.0	775.0	2362.0	0.0	0.0	4.0	2366.0	157.80
CSCI	1598.0	1299.0	2897.0	0.0	0.0	6.0	2903.0	193.63
ECON	1566.0	1002.0	2568.0	6.0	0.0	0.0	2574.0	171.60
ENGL	1416.0	3540.0	4956.0	18.0	0.0	6.0	4980.0	332.10
GEAN	1516.0	1621.0	3137.0	6.0	0.0	3.0	3146.0	209.78
HIST	2166.0	2604.0	4770.0	15.0	0.0	0.0	4785.0	319.00
INTR	129.0	561.0	690.0	0.0	0.0	0.0	690.0	46.00
LANG	1251.0	1230.0	2481.0	9.0	0.0	18.0	2508.0	167.50
LAWJ	1050.0	2346.0	3396.0	0.0	0.0	0.0	3396.0	226.40
MATH	6170.0	2897.0	9067.0	19.0	87.0	90.0	9263.0	620.48
PHRE	1455.0	1629.0	3084.0	0.0	0.0	3.0	3087.0	205.85
PHYS	1295.0	1399.0	2694.0	0.0	0.0	0.0	2694.0	179.60
POSC	1338.0	1320.0	2658.0	0.0	0.0	0.0	2658.0	177.20
PSY	2888.0	3419.0	6307.0	15.0	21.0	675.0	7018.0	479.47
SOC	1740.0	2337.0	4077.0	3.0	0.0	0.0	4080.0	272.00
Liberal Arts & Sci	28560.0	29969.0	58529.0	91.0	108.0	812.0	59540.0	3984.67
INTR	150.0	126.0	276.0	0.0	0.0	0.0	276.0	18.40
HONR	237.0	105.0	342.0	0.0	0.0	0.0	342.0	22.80
INTR	42.0	15.0	57.0	0.0	0.0	0.0	57.0	3.80
University Total	50299.0	64042.5	114341.5	1295.0	344.0	6375.5	122356.0	8269.06

*FTE Formula: $[(\text{total undergrad} + \text{post-bacc \& cert})/15] + (\text{graduate cert} + \text{graduate})/12]$

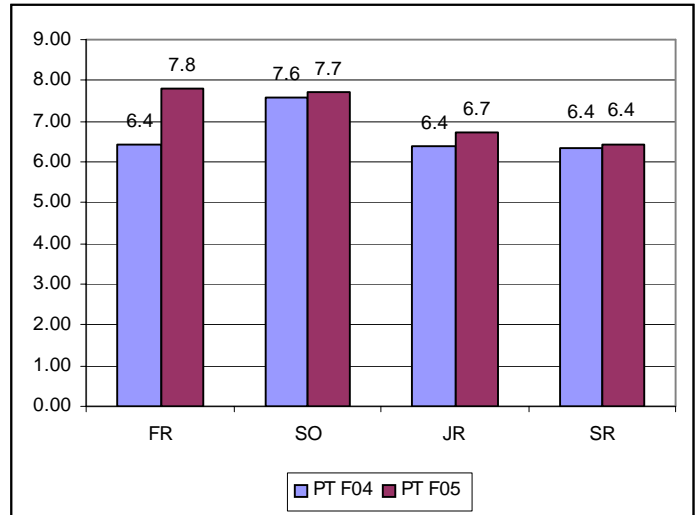
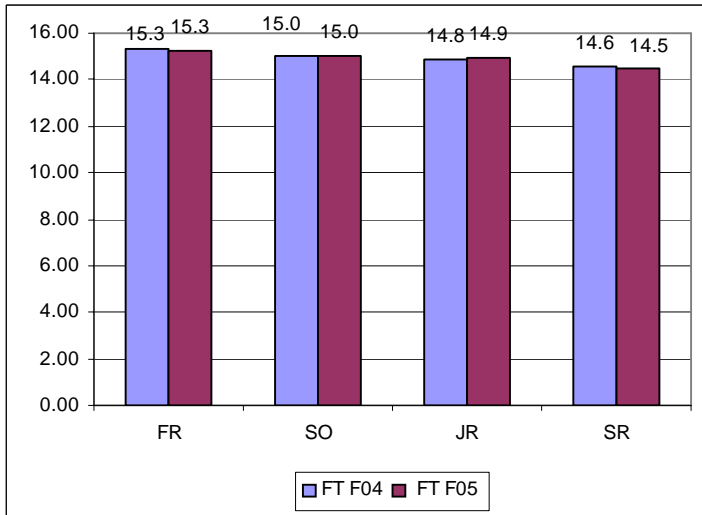
Majors by College, Degree Type, and Department for Fall 2005

Sum major 1 and major 2 (dual and double majors) for the total number of students serviced/housed by a specific department.

	Major 1	Major 2	Sec Edu		Major 1	Major 2	Sec Edu
BUS BS ACCF 0502 Bus Admin: Spec-Accounting	3			ED PCrt SEED G603 ESL/Bilingual Education-Prof Cert	11		
BUS BS ACCF 0503 Accounting	214	7	5	ED PCrt SPED G618 Learning Disability-Prof Cert	18		
BUS BS ACCF 0504 Bus Admin: Spec-Finance	130	3	3	ED Prob NODP G999 Education Probationary	18		
BUS BS MANG 0505 Bus Admin: Spec-Hum Res Mgt	30	19	1	Education Total	2,452	197	66
BUS BS MANG 0507 Bus Admin: Spec-Entrepreneurship	52	2	1	ENGN BS CE 0908 Civil Engineering	129		2
BUS BS MANG 0520 Bus Admin: Spec-MIS	79	1	1	ENGN BS CHE 0906 Chemical Engineering	116		1
BUS BS MANG 0522 Bus Admin: Spec-Management	230	8	4	ENGN BS ECE 0919 Electrical & Computer Engineering	110		3
BUS BS MARK 0509 Bus Admin: Spec-Marketing	199	5	3	ENGN BS ENGN 0901 General Engineering	1		
BUS MBA BUS G501 Business Administration	76			ENGN BS MECH 0910 Mechanical Engineering	134		2
BUS ND BUS 0550 Pre-MBA	18			ENGN MS ENGN G901 Engineering	37		
BUS Prob NODP G998 Business probation	5			ENGN Prob NODP G996 Probationary Engineering	7		
Business Total	1,036	45	18	Engineering Total	534	0	8
COMMBA COSD 0605 Comm: Spec-Com Studies	70	3	2	FPA BA ART 1000 Art: Spec-Art Education	93	1	48
COMMBA JCWR 0602 Comm: Spec-Journalism	112	5	5	FPA BA ART 1001 Art	94	6	5
COMMBA PBRL 0604 Comm: Spec-Advertising	117	2		FPA BA MUS 1005 Music	33	1	7
COMMBA PBRL 0606 Comm: Spec-Public Relations	130	3	6	FPA BA THD 1077 Theatre: Spec-Theatre Arts	73	3	8
COMMBA RTVF 0603 Comm: Spec-Radio/TV/Film	370	2	12	FPA BA THD 1079 Theatre: Spec-Child Drama	14	20	2
COMMBA WRAR 0608 Comm: Spec-Writing Arts	74	140	9	FPA BFA ART 1003 Studio Art	45		8
COMMMA PBRL G895 Public Relations	21			FPA BM MUS 1106 Music: Spec-Education	83	2	24
COMMMA WRAR G608 Writing	35			FPA BM MUS 1112 Music: Spec-Composition	2		
COMM Prob NODP G995 Comm: Probationary	14			FPA BM MUS 1113 Music: Spec-Jazz Studies	11		2
Communication Total	943	155	34	FPA BM MUS 1114 Music: Spec-Performance	39	2	4
ED BA EECE 0801 Elementary Ed: Spec-Early Child	140		2	FPA MA THD G007 Theatre	5		
ED BA EECE 0802 Elementary Ed: Spec-None	328			FPA MM MUS G005 Performance	14		
ED BA EECE 0807 Edu: Spec-Elementary Edu	430		1	Fine & Performing Arts Total	506	35	108
ED BA HES 0808 Edu: Spec-HES Teacher Cert	165	1	8	LAS BA ECON 2204 Economics	65		
ED BA HES 0832 Health/Exer Sci: Spec-Athletic Training	76	1	5	LAS BA ENGL 1501 English	305	152	109
ED BA HES 0833 Health/Exer Sci: Spec-Health Pro & Fit	81		4	LAS BA GEAN 2206 Geography	33	31	1
ED BA HES 0834 Health/Exer Sci: Spec-Teach Cert	190	1	9	LAS BA HIST 2205 History	381	112	134
ED BA INTR 0803 Collaborative Education	100			LAS BA LANG 1105 Spanish	57	36	21
ED BA SEED 0805 Edu: Spec-Subject Matter Teaching		194		LAS BA LAJW 2105 Law/Justice	497	2	12
ED BA SPED 0810 Teacher of the Handicapped	93		7	LAS BA MATH 1701 Mathematics	178	79	65
ED BA SPED 1201 School Nursing	13			LAS BA PHRE 4934 Liberal Studies: Spec-Math/Sci	24	67	6
ED Cert EECE 9802 Elementary Education-Cert	27			LAS BA PHRE 4935 Liberal Studies: Spec-Art Studies	58	177	6
ED Cert HES 9837 Physical Education-Cert	8			LAS BA POSC 2207 Political Science	92	3	
ED Cert READ 9830 Reading-Cert	3			LAS BA PSY 2000 Psychology	261	35	15
ED Cert SEED 9001 Art-Cert	4		2	LAS BA PSY 2001 Psychology: Spec-Child Behav Ser	32		2
ED Cert SEED 9005 Music-Cert	7		5	LAS BA SOC 2208 Sociology	151	79	8
ED Cert SEED 9105 Spanish-Cert	1		1	LAS BS BISC 0400 Biological Sciences	338	4	22
ED Cert SEED 9201 Social Studies-Cert	16		5	LAS BS CHEM 1905 Chemistry	33		1
ED Cert SEED 9400 Biological Science-Cert	1		1	LAS BS CHEM 1906 Physical Sci: Spec-Chemistry	10		3
ED Cert SEED 9500 General Business-Cert	10		7	LAS BS CHEM 1907 Biochemistry	43	1	2
ED Cert SEED 9501 English-Cert	11		7	LAS BS CSCI 0701 Computer Science: Spec-None	144	2	4
ED Cert SEED 9701 Mathematics-Cert	6		1	LAS BS CSCI 0702 Comp Sci: Spec-Artificial Intelligence	2		
ED Cert SEED 9901 Physical Science-Cert	1			LAS BS CSCI 0703 Comp Sci: Spec-Information Technology	6	1	1
ED Cert SPED 9221 School Nurse-Cert	35		1	LAS BS CSCI 0704 Comp Sci: Spec-Prog Languages/Compilers	1		
ED Cert SPED 9810 Teacher of the Handicapped-Cert	4			LAS BS CSCI 0705 Comp Sci: Spec-Numerical/Scientific Comp	1		
ED COG EECE G113 Computers in Education-COG	1			LAS BS CSCI 0706 Comp Sci: Spec-Network/Op Sys	4		
ED EDD EDLD D928 Educational Leadership	54			LAS BS CSCI 0707 Comp Sci: Spec-Software Engineering	6		
ED EDS SPED ES03 EDS: School Psychology	58			LAS BS MATH 1702 Mathematics	22	1	6
ED MA EDLD G807 Higher Education	37			LAS BS PHYS 1902 Physics	41		8
ED MA EDLD G827 School Administration	116			LAS BS PHYS 1918 Physical Sci: Spec-General Sci	15		6
ED MA EDLD G829 Supervision-Curriculum Development	5			LAS BS PHYS/CHEM 1901 Physical Science	7		3
ED MA EDLD G898 School Business Administration	3			LAS BSN BISC 1203 Nursing	26		
ED MA EECE G801 Elementary School Teaching	10			LAS COG MATH G119 Middle Grades Mathematics Edu	29		
ED MA EECE G841 Educational Technology	16			LAS MA MATH G701 Mathematics	6		
ED MA MUS G006 Music Education	2			LAS MA PSY G209 Applied Psychology	38		
ED MA READ G830 Reading Education	57			LAS MA PSY G211 Mental Health Counseling	2		
ED MA SEED G601 School & Public Librarianship	43			LAS Prob LAS G997 Arts & Sciences Probation	2		
ED MA SEED G831 SMT - Art	3			Liberal Arts & Sciences Total	2,910	782	435
ED MA SEED G833 SMT - Mathematics	2			NC ND NODP 4999 Undeclared undergraduate	829		18
ED MA SEED G834 SMT - Science	1			NC ND NODP G000 Graduate: Non-matriculated	228		
ED MA SEED G917 Environ Edu & Conservation	3			NC ND NODP G101 Graduate: Pre-matriculated	54		
ED MA SPED G809 Special Education	15			NC ND NODP G990 Promising Scholars Program	2		
ED MA SPED G818 Learning Disabilities	50			NC ND NODP UND Non-matriculated undergraduate	267		
ED MA SPED G822 School Psychology	29			NC ND NODP G993 Graduate: Non-degree	1		
ED MA SPED G826 Student Personnel Services	86			University Total	9,762	1,214	687
ED MED EDLD G812 Standards-Based Practice	1						
ED MST EECE G810 Collaborative Teaching	28						
ED PCrt EDLD G629 Principal/Supervisor-Prof Cert	23						
ED PCrt HES G637 Substance Awareness Coord-Prof Cert	3						

The numbers in italics above ("Sec Edu") are included in the Major 1 counts. For example, there are 342 (338 + 4) majors housed in 0400 Biological Science. 22 of the 342 students are enrolled in secondary education.

Average Class Load
(Full-Time and Part-Time)



For more information visit our web page at
<http://www.rowan.edu/open/irp>
or contact Kate Boland
at 256-4474 or boland@rowan.edu

Office of Institutional Research & Planning
Rowan University
Bole Hall Annex
Glassboro, New Jersey 08028
(856) 256-4146