

# Research Brief

A publication from Rowan University's **Office of Institutional Research and Planning**  
to provide targeted information to the Rowan community

February 2005

Volume FY 2005: Brief 2

## Spring 2005 Enrollment

The Office of Institutional Research and Planning, in a continuing effort to improve the reporting of useful information in a timely manner, has changed some of the content of the Spring Enrollment *Research Brief*. The first change is in one of the definitions of full-time equivalent student (FTE). This change, labeled "IPEDS FTE" accommodates the comparison of Rowan to other institutions. A second change, on page two, includes the total FTE students serviced by each department. These figures are used to calculate the student:faculty ratio. The third change, on page three, combines all curriculum codes together in an academic department. The final change to this *Research Brief* is on page four. One graph displays the distribution of Rowan students by ethnic code. Two additional graphs show the change in average course load for matriculated undergraduates in **Spring 2004** and **Spring 2005**. We hope these changes are useful. And, as always, your comments are appreciated.

### How do we calculate a full-time equivalent student (FTE)?

There are two common formulae used in the calculation of an FTE.

#### FTE definition 1:

The sum of undergraduate student credit hours divided by 15 plus the sum of graduate student credit hours divided by 12.

Example:

Undergraduate SCH (NU,FR,SO,JR,SR,PB,CR)  
 $108,440.5/15 = 7,229.367$

Graduate SCH (NG,CG,GR,DR)  
 $7,084.5/12 = 590.375$

Total FTE  
 $(7,229.367 + 590.375) = 7,819.742$

#### FTE definition 2(IPEDSFTE):

Used for mandatory federal reporting (i.e., IPEDS) and publications ranging from Baron's to U.S. News. The full-time headcount plus 1/3 of part-time headcount.

Example:

Full-time HC = 6990  
Part-time HC/3 (2426/3)= 808.67  
Total FTE (6990+808.67)=7798.67

<b>SCH</b>	<b>115,525.0</b>
<b>FTE (Definition 1)</b>	<b>7,819.74</b>
<b>FTE (Definition 2)</b>	<b>7,798.67</b>

#### Gender

Female	5,500
Male	3,954

Courseload	SCH	Headcount
<b>Undergraduate</b>		
Full-Time	100,193.5	6,753
Part-Time	8,247.0	1,329
<b>Totals</b>	<b>108,440.5</b>	<b>8,082</b>

#### Graduate

Full-Time	2,567.5	237
Part-Time	4,517.0	1,135
<b>Totals</b>	<b>7,084.5</b>	<b>1,372</b>

<b>University Totals</b>	<b>115,525</b>	<b>9,454</b>
--------------------------	----------------	--------------

#### Ethnic Breakdown

Black	854	9.0%
American Indian/Native Alaskan	29	0.3%
Asian	291	3.1%
Hispanic	522	5.5%
White	7514	79.5%
Not Reported	244	2.6%

(continued on page 4)

## Total Semester Credit Hours by Student Level - Spring 2005

This table reflects the number of semester credit hours consumed by students based on the student's class level. For instance, the accounting department generated 2,718 credit hours for the Spring 2005 Semester. Of these 2,718 credit hours, 564 were

consumed by freshman, sophomore, and non-matriculated students; 2046 were consumed by junior and senior students; 27 were consumed by post-bac students; and 81 were consumed by graduate students.

	Lower Division	Upper Division	Total Undergraduate	Post-Bacc & Cert	Graduate Certs	Graduate	Total	FTE*
ACCF	564.0	2046.0	2610.0	27.0	0.0	81.0	2718.0	182.55
BUS	0.0	0.0	0.0	0.0	0.0	76.5	76.5	6.38
MANG	390.0	3024.0	3414.0	15.0	0.0	168.0	3597.0	242.60
MARK	537.0	1437.0	1974.0	6.0	0.0	96.0	2076.0	140.00
<b>Business</b>	<b>1491.0</b>	<b>6507.0</b>	<b>7998.0</b>	<b>48.0</b>	<b>0.0</b>	<b>421.5</b>	<b>8467.5</b>	<b>571.53</b>
CORH	3740.0	1058.0	4798.0	0.0	0.0	246.0	5044.0	340.37
COSD	1656.0	2742.0	4398.0	3.0	0.0	6.0	4407.0	293.90
JCWR	0.0	3.0	3.0	0.0	0.0	27.0	30.0	2.45
JOUR	303.0	1104.0	1407.0	0.0	0.0	0.0	1407.0	93.80
PBRL	279.0	1185.0	1464.0	0.0	0.0	300.0	1764.0	122.60
RTVF	345.0	1950.0	2295.0	3.0	0.0	3.0	2301.0	153.45
<b>Communication</b>	<b>6323.0</b>	<b>8042.0</b>	<b>14365.0</b>	<b>6.0</b>	<b>0.0</b>	<b>582.0</b>	<b>14953.0</b>	<b>1006.57</b>
EDLD	24.0	18.0	42.0	0.0	60.0	1271.0	1373.0	113.72
EECE	84.0	3403.0	3487.0	131.0	12.0	144.0	3774.0	254.20
HES	1835.0	4312.0	6147.0	107.0	51.0	9.0	6314.0	421.93
READ	381.0	1032.0	1413.0	120.0	0.0	339.0	1872.0	130.45
SEED	1426.0	2624.0	4050.0	396.0	152.0	1002.0	5600.0	392.57
SPED	99.0	1741.0	1840.0	249.0	75.0	1578.0	3742.0	277.02
<b>Education</b>	<b>3849.0</b>	<b>13130.0</b>	<b>16979.0</b>	<b>1003.0</b>	<b>350.0</b>	<b>4343.0</b>	<b>22675.0</b>	<b>1589.88</b>
CE	87.0	591.0	678.0	0.0	0.0	51.0	729.0	49.45
CHE	38.0	371.0	409.0	0.0	0.0	57.0	466.0	32.02
ECE	92.0	468.0	560.0	0.0	0.0	117.0	677.0	47.08
ENGN	854.0	667.0	1521.0	0.0	0.0	87.0	1608.0	108.65
MECH	26.0	372.0	398.0	0.0	0.0	54.0	452.0	31.03
<b>Engineering</b>	<b>1097.0</b>	<b>2469.0</b>	<b>3566.0</b>	<b>0.0</b>	<b>0.0</b>	<b>366.0</b>	<b>3932.0</b>	<b>268.23</b>
ART	1053.0	2053.5	3106.5	6.0	0.0	45.0	3157.5	211.25
MUS	1279.5	1111.0	2390.5	32.5	0.0	114.0	2537.0	171.03
THD	1286.5	1312.5	2599.0	0.0	0.0	42.0	2641.0	176.77
<b>Fine &amp; Perf Arts</b>	<b>3619.0</b>	<b>4477.0</b>	<b>8096.0</b>	<b>38.5</b>	<b>0.0</b>	<b>201.0</b>	<b>8335.5</b>	<b>559.05</b>
BISC	1009.0	2169.0	3178.0	0.0	0.0	12.0	3190.0	212.87
CHEM	855.0	1036.0	1891.0	0.0	0.0	7.0	1898.0	126.65
CSCI	1727.0	1573.0	3300.0	3.0	0.0	6.0	3309.0	220.70
ECON	1494.0	891.0	2385.0	24.0	0.0	3.0	2412.0	160.85
ENGL	1323.0	3003.0	4326.0	12.0	0.0	3.0	4341.0	289.45
GEAN	1259.0	1557.0	2816.0	12.0	0.0	9.0	2837.0	189.28
HIST	2079.0	2160.0	4239.0	3.0	0.0	3.0	4245.0	283.05
INTR	276.0	684.0	960.0	0.0	0.0	0.0	960.0	64.00
LANG	1023.0	1044.0	2067.0	0.0	0.0	15.0	2082.0	139.05
LAWJ	1290.0	2589.0	3879.0	0.0	0.0	0.0	3879.0	258.60
MATH	5277.0	2775.0	8052.0	30.0	0.0	160.0	8242.0	552.13
PHRE	1050.0	1743.0	2793.0	0.0	0.0	0.0	2793.0	186.20
PHYS	1286.0	1639.0	2925.0	0.0	0.0	0.0	2925.0	195.00
POSC	1134.0	1233.0	2367.0	6.0	0.0	0.0	2373.0	158.20
PSY	2725.0	3467.0	6192.0	18.0	12.0	591.0	6813.0	464.25
SOC	1614.0	2559.0	4173.0	0.0	0.0	0.0	4173.0	278.20
<b>Liberal Arts &amp; Sci</b>	<b>25421.0</b>	<b>30122.0</b>	<b>55543.0</b>	<b>108.0</b>	<b>12.0</b>	<b>809.0</b>	<b>56472.0</b>	<b>3778.48</b>
HONR	103.0	88.0	191.0	0.0	0.0	0.0	191.0	12.73
INTR	30.0	15.0	45.0	0.0	0.0	0.0	45.0	3.00
INTR	216.0	238.0	454.0	0.0	0.0	0.0	454.0	30.27
<b>University Total</b>	<b>42149.0</b>	<b>65088.0</b>	<b>107237.0</b>	<b>1203.5</b>	<b>362.0</b>	<b>6722.5</b>	<b>115525.0</b>	<b>7819.74</b>

\*FTE Formula: [(total undergrad + post-bacc & cert)/15] + (graduate cert + graduate)/12]

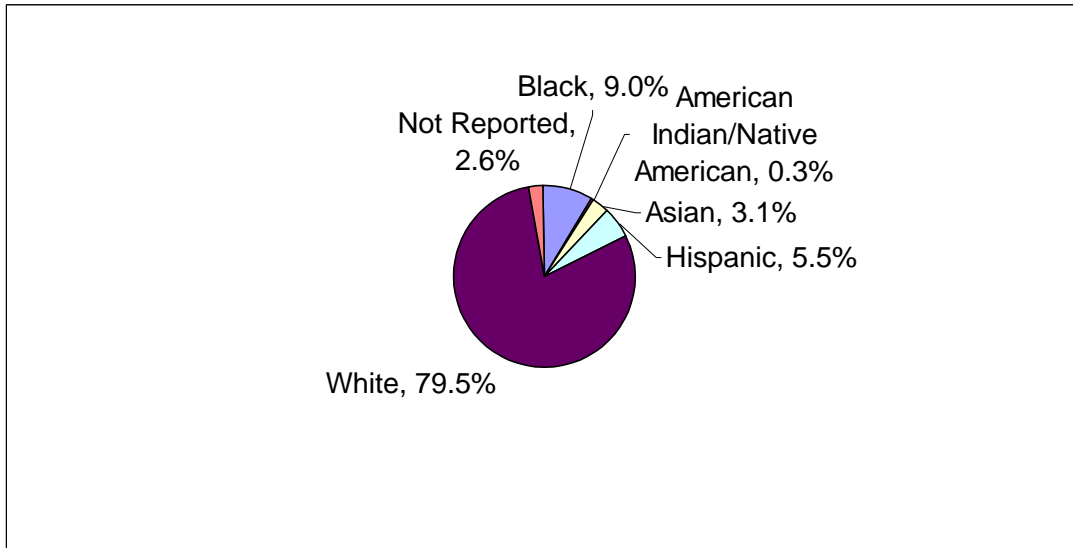
## Total Headcount Enrollment by Major 1 and Major 2 - Spring 2005

Sum major 1 and major2 (which includes coordinate majors) for the total number of students serviced/housed by a specific department

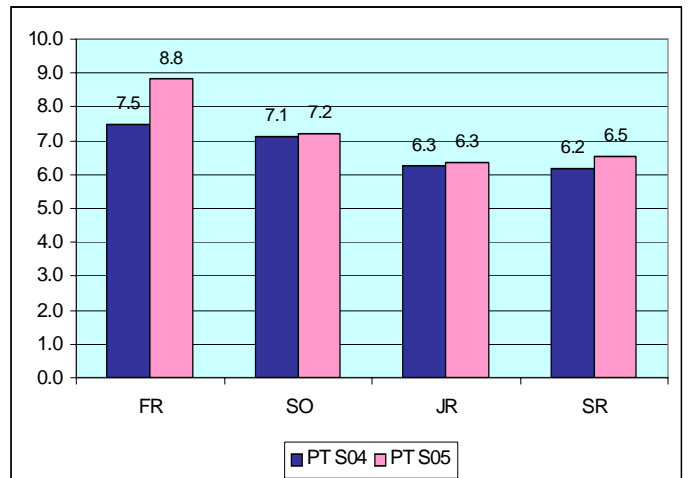
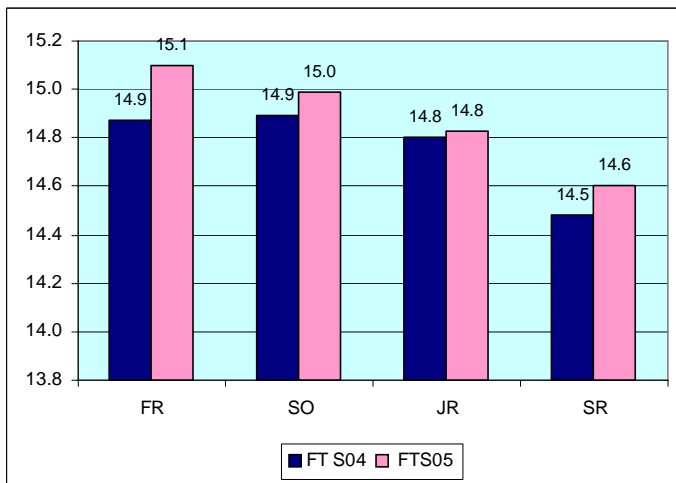
		Major 1	Major 2	Sec Edu				Major 1	Major 2	Sec Edu
BUS BS ACCF 0502 Accounting Spec.		4				ED PCrt SEED G600 Assoc Ed Media Specialist Prof Cert		7		
BUS BS ACCF 0503 Accounting		204	7	5		ED PCrt SEED G603 ESL/Bilingual Education Prof Cert		26		
BUS BS ACCF 0504 Finance Spec.		120	4	1		ED PCrt SEED G698 School Business Admin Prof Cert		1		
BUS BS BUS 0507 Entrepreneurship Spec.		28				ED PCrt SPED G618 Learning Disability Prof Cert		23		
BUS BS MANG 0505 Human Resource Mgt Spec.		27	16	1		ED Prob NODP G999 Education Probationary		22		
BUS BS MANG 0520 MIS Spec.		106	1	1		<b>Education Total</b>	<b>2528</b>	<b>3</b>	<b>74</b>	
BUS BS MANG 0522 Management Spec.		200	6	3		ENGN BS CE 0908 Civil Engineering		116		
BUS BS MARK 0509 Marketing Spec.		220	4	3		ENGN BS CHE 0906 Chemical Engineering		104		
BUS MBA BUS G501 Business Administration		70				ENGN BS ECE 0919 Electrical Computer Engineering		111		
BUS ND BUS 0550 Pre-MBA		16				ENGN BS MECH 0910 Mechanical Engineering		130		1
BUS Prob NODP G998 Business Probationary		3				ENGN MS ENGN G901 Engineering		36		
<b>Business Total</b>		<b>998</b>	<b>38</b>	<b>14</b>		ENGN Prob NODP G996 Probationary Engineering		5		
						<b>Engineering Total</b>	<b>502</b>	<b>0</b>	<b>1</b>	
COMM BA CORH 0608 Writing Arts Spec.		59	100	6		FPA BA ART 1000 Art: Art Education Spec.		87		56
COMM BA COSD 0605 Communication Studies Spec.		66	3	1		FPA BA ART 1001 Art		99	8	7
COMM BA JCWR 0602 Journalism Spec.		108	4	2		FPA BA MUS 1005 Music		29	5	11
COMM BA PBRL 0604 Advertising Spec.		118	1			FPA BA THD 1077 Theatre Arts Spec.		79	3	11
COMM BA PBRL 0606 Public Relations Spec.		145	6	7		FPA BA THD 1079 Child Drama Spec.		11	30	2
COMM BA RTVF 0603 Radio/TV/Film Spec.		337	4	6		FPA BFA ART 1003 Studio Art		36		6
COMM MA CORH G608 Writing		39				FPA BM MUS 1106 Music Education Spec.		64	1	26
COMM MA PBRL G895 Public Relations		27				FPA BM MUS 1112 Theory/Composition Spec.		4	1	
COMM Prob NODP G995 Communication Probationary		9				FPA BM MUS 1113 Jazz Studies Spec.		14		2
<b>Communication Total</b>		<b>908</b>	<b>118</b>	<b>22</b>		FPA BM MUS 1114 Performance Spec.		34	2	6
						FPA MA THD G007 Theatre		9		
ED BA EECE 0801 Elem Ed Early Child/Spec Ed Spec.		104		2		FPA MM MUS G005 Performance		18		
ED BA EECE 0802 Elementary Education		713				<b>Fine &amp; Performing Arts Total</b>	<b>484</b>	<b>50</b>	<b>127</b>	
ED BA HES 0832 H/ES Athletic Training		63	1			LAS BA ECON 2204 Economics		71		1
ED BA HES 0833 H/ES Health Promotion & Fitness Mgt		85		2		LAS BA ENGL 1501 English		296	119	121
ED BA HES 0834 H/ES Teacher Certification		335	2	17		LAS BA GEAN 2206 Geography		35	22	4
ED BA INTR 0803 Collaborative Teaching		100		9		LAS BA HIST 2205 History		346	87	138
ED BA SPED 0810 Teacher of the Handicapped		134				LAS BA LANG 1105 Spanish		68	32	26
ED BA SPED 1201 School Nursing		17				LAS BA LAWJ 2105 Law/Justice		490	1	14
ED Cert EECE 9802 Elementary Education Cert		23				LAS BA MATH 1701 Mathematics		195	62	87
ED Cert HES 9837 Physical Education Cert		9		1		LAS BA PHRE 4934 Math/Science Spec.		24	72	7
ED Cert READ 9830 Reading Cert		2				LAS BA PHRE 4935 American Studies Spec.		62	187	4
ED Cert SEED 9001 Art Cert		3		3		LAS BA POSC 2207 Political Science		91	1	1
ED Cert SEED 9005 Music Cert		5		5		LAS BA PSY 2000 Psychology		266	66	16
ED Cert SEED 9105 Spanish Cert		1				LAS BA PSY 2001 Child Behavioral Services		26		1
ED Cert SEED 9201 Social Studies Cert		9		8		LAS BA SOC 2208 Sociology		171	94	11
ED Cert SEED 9400 Biological Science Cert		3		2		LAS BS BISC 0400 Biological Sciences		315	5	23
ED Cert SEED 9500 General Business Cert		18		17		LAS BS CHEM 1905 Chemistry		26	1	1
ED Cert SEED 9501 English Cert		9		8		LAS BS CHEM 1906 Chemistry Spec.		9		6
ED Cert SEED 9701 Mathematics Cert		1				LAS BS CHEM 1907 Biochemistry		29	1	1
ED Cert SPED 9221 School Nurse Cert		34				LAS BS CSCI 0701 Computer Science		181	3	2
ED Cert SPED 9810 Teacher of the Handicapped Cert		13				LAS BS CSCI 0702 Artificial Intelligence Spec.		2		
ED COG EECE G113 Computers in Education COG		1				LAS BS CSCI 0703 Information Technology Spec.		2	1	
ED EDD EDLD D928 Educational Leadership		55				LAS BS CSCI 0706 Network/Operating Systems Spec.		1		
ED EDS SPED ES03 EDS: School Psychology		58				LAS BS MATH 1702 Mathematics		11		5
ED MA EDLD G807 Higher Education		36				LAS BS PHYS 1902 Physics		39		9
ED MA EDLD G827 School Administration		132				LAS BS PHYS 1918 Physical Science - General Science S		10		5
ED MA EDLD G829 Supervision-Curriculum Development		5				LAS BS PHYS/CHEM 1901 Physical Science		9		5
ED MA EDLD G898 School Business Administration		4				LAS BSN BISC 1203 Nursing		8		
ED MA EECE G801 Elementary School Teaching		16				LAS Cert GEAN A206 Cartography & Geological Inform Sys		1		
ED MA MUS G006 Music Education		5				LAS MA MATH G701 Mathematics		4		
ED MA READ G830 Reading Education		66				LAS MA PSY G209 Applied Psychology		29		
ED MA SEED G601 School & Public Librarianship		60				LAS Prob LAS G997 Arts & Sciences Probationary		2		
ED MA SEED G831 SMT - Art		1				<b>Liberal Arts &amp; Sciences Total</b>	<b>2819</b>	<b>754</b>	<b>488</b>	
ED MA SEED G833 SMT - Mathematics		3				NC ND NODP 4999 Undeclared undergraduate		722		8
ED MA SEED G834 SMT - Science		3				NC ND NODP G000 Graduate: Non-matriculated		231		
ED MA SEED G917 Environmental Education & Conservat		6				NC ND NODP G101 Graduate: Pre-matriculated		39		
ED MA SPED G809 Special Education		27				NC ND NODP G990 Promising Scholars Program		4		
ED MA SPED G818 Learning Disabilities		56				NC ND NODP UND Non-matriculated undergraduate		219		
ED MA SPED G822 School Psychology		31								
ED MA SPED G826 Student Personnel Services		99				<b>University Total</b>	<b>9454</b>	<b>963</b>	<b>734</b>	
ED MA TECH G840 Technology Education		20								
ED MST EECE G800 Elementary Education		6								
ED MST EECE G810 Collaborative Teaching		19								
ED MST SEED G802 Secondary Education		10								
ED MST SPED G808 Special Education		5								
ED PCrt EDLD G629 Principal/Supervisor Prof Cert		27								
ED PCrt HES G637 Substance Awareness Coord Prof Cert		17								

The numbers in italics above ("Sec Edu") are included in the Major 1 counts. For example, there are 320 (315+5) majors housed in 0400 Biological Science. 23 of the 320 students are enrolled in secondary education.

## Total Headcount Enrollment by Ethnic Category



## Matriculated Undergraduate Headcount by Average Class Load (Full-Time and Part-Time)



For more information visit our web page at  
<http://www.rowan.edu>.  
 Our listing is under Professional and Academic Service -  
 Institutional Research and Planning or contact Kate Boland  
 at 256-4474 or boland@rowan.edu

Institutional Research and Planning  
 Rowan University  
 Bole Hall Annex  
 Glassboro, New Jersey 08028  
 (856) 256-4146