

Research Brief

A publication from Rowan University's **Office of Institutional Research and Planning**
to provide targeted information to the Rowan community

November 2006

Volume FY 2007: Brief 1

Fall 2006 Enrollment Data

This Research Brief contains a snapshot of Fall 2006 enrollment and student credit hours as of the 10th day of class. This page summarizes enrollment by FTE, gender, ethnic category, and courseload. Page 2 displays student credit hour production by department and by student level. Page 3 lists enrollment by major within department. Page 4 contains average class load for matriculated undergraduates.

Full-Time Equivalent Student (FTE)

There are two common formulae used in the calculation of an FTE.

FTE -Definition 1: The sum of undergraduate student credit hours divided by 15 plus the sum of graduate student credit hours divided by 12.

Undergraduate SCH (NU,FR,SO,JR,SR,PB,CR) Graduate SCH (NG,CG,GR,DR)
114,412.0/15 = 7,627.5 6,390.0/12 = 532.5

Total FTE = (7,627.5 + 532.5) = **8,160.0**

FTE -Definition 2 (IPEDS FTE): The full-time headcount plus 1/3 of part-time head-count.

Full-time HC = 7,434 Part-time HC/3 = (2,144/3) = 714.7

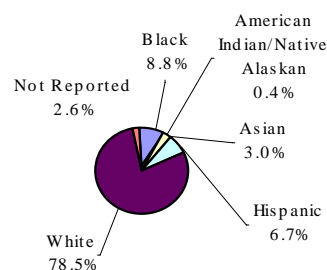
Total FTE = (7,434+714.7)= **8,148.7**

Demographics

Gender

Female	5,354	55.9%
Male	4,209	43.9%
Not Reported	15	0.2%
Total	9,578	100.0%

Race/Ethnicity



Black	847	8.8%
Am Indian/Native Alaskan	39	0.4%
Asian	287	3.0%
Hispanic	638	6.7%
White	7,515	78.5%
Not Reported	252	2.6%
Total	9,578	100.0%

Courseload	SCH	Headcount
------------	-----	-----------

Undergraduate

Full-Time	107,095.5	7,213
Part-Time	7,316.5	1,217
Total	114,412.0	8,430

Graduate

Full-Time	2,541.0	221
Part-Time	3,849.0	927
Total	6,390.0	1,148

University Total	120,802.0	9,578
-------------------------	------------------	--------------

Total Semester Credit Hours by Student Level - Fall 2006

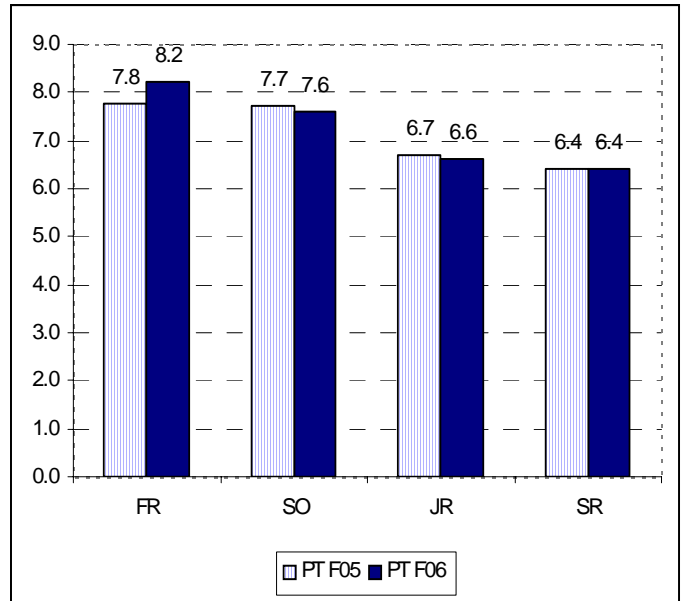
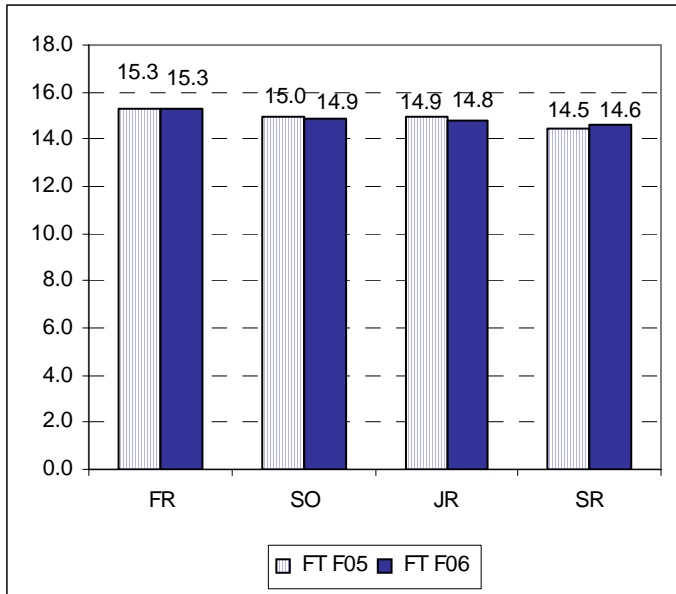
This table reflects the number of semester credit hours consumed by students based on the student's class level. For instance, the accounting department generated 3,243 credit hours for the Fall 2006 Semester. Of these 3,243 credit hours, 645 were consumed

by freshman, sophomore, and non-matriculated students; 2,427 were consumed by junior and senior students; 36 were consumed by post-bac students; and 135 were consumed by graduate students.

	Lower Division	Upper Division	Total Undergraduate	Post-Bacc & Cert	Graduate Certs	Graduate & Doctoral	Total	FTE*
ACCF	645.0	2,427.0	3,072.0	36.0	0.0	135.0	3,243.0	218.45
MANG	675.0	3,078.0	3,753.0	15.0	0.0	294.0	4,062.0	275.70
MARK	444.0	1,323.0	1,767.0	18.0	0.0	0.0	1,785.0	119.00
Business	1,764.0	6,828.0	8,592.0	69.0	0.0	429.0	9,090.0	613.15
COSD	2,589.0	2,184.0	4,773.0	0.0	0.0	3.0	4,776.0	318.45
JOUR	285.0	1,305.0	1,590.0	0.0	0.0	81.0	1,671.0	112.75
PBRL	441.0	1,843.0	2,284.0	0.0	0.0	246.0	2,530.0	172.77
RTVF	693.0	1,638.0	2,331.0	0.0	0.0	0.0	2,331.0	155.40
WRAR	4,836.0	1,283.0	6,119.0	3.0	0.0	210.0	6,332.0	425.63
Communication	8,844.0	8,253.0	17,097.0	3.0	0.0	540.0	17,640.0	1,185.00
EDLD	0.0	0.0	0.0	0.0	60.0	1,059.0	1,119.0	93.25
FNDS	1,972.0	1,250.0	3,222.0	46.0	39.0	330.0	3,637.0	248.62
HES	1,631.0	4,051.0	5,682.0	105.0	0.0	0.0	5,787.0	385.80
READ	1,052.0	1,599.0	2,651.0	90.0	9.0	213.0	2,963.0	201.23
SPED	693.0	1,247.0	1,940.0	293.0	101.0	1,681.0	4,015.0	297.37
TCHR	622.0	4,205.0	4,827.0	238.0	57.0	522.0	5,644.0	385.92
Education	5,970.0	12,352.0	18,322.0	772.0	266.0	3,805.0	23,165.0	1,612.18
CE	0.0	564.0	564.0	0.0	0.0	51.0	615.0	41.85
CHE	56.0	388.0	444.0	0.0	0.0	27.0	471.0	31.85
ECE	92.0	538.0	630.0	0.0	0.0	46.0	676.0	45.83
ENGR	864.0	731.0	1,595.0	0.0	0.0	58.0	1,653.0	111.17
MECH	8.0	451.0	459.0	0.0	0.0	48.0	507.0	34.60
Engineering	1,020.0	2,672.0	3,692.0	0.0	0.0	230.0	3,922.0	265.30
ART	1,287.0	1,914.0	3,201.0	3.0	0.0	3.0	3,207.0	213.85
MUS	1,806.5	1,288.5	3,095.0	4.5	0.0	61.0	3,160.5	211.72
THD	1,109.0	1,008.5	2,117.5	0.0	0.0	12.0	2,129.5	142.17
Fine & Perf Arts	4,202.5	4,211.0	8,413.5	7.5	0.0	76.0	8,497.0	567.73
BISC	1,388.0	2,131.0	3,519.0	0.0	0.0	8.0	3,527.0	235.27
CHEM	1,617.0	988.0	2,605.0	0.0	0.0	0.0	2,605.0	173.67
CSCI	1,418.0	1,311.0	2,729.0	0.0	0.0	19.0	2,748.0	183.52
ECON	1,281.0	972.0	2,253.0	0.0	0.0	0.0	2,253.0	150.20
ENGL	1,608.0	3,321.0	4,929.0	3.0	0.0	0.0	4,932.0	328.80
GEAN	1,267.0	1,467.0	2,734.0	12.0	0.0	15.0	2,761.0	184.32
HIST	1,941.0	2,208.0	4,149.0	3.0	0.0	0.0	4,152.0	276.80
INTR	198.0	531.0	729.0	0.0	0.0	0.0	729.0	48.60
LANG	1,113.0	1,209.0	2,322.0	0.0	0.0	15.0	2,337.0	156.05
LAWJ	1,191.0	2,202.0	3,393.0	0.0	0.0	0.0	3,393.0	226.20
MATH	6,029.0	2,994.0	9,023.0	27.0	120.0	117.0	9,287.0	623.08
PHRE	1,590.0	1,587.0	3,177.0	0.0	0.0	3.0	3,180.0	212.05
PHYS	1,397.0	1,477.0	2,874.0	0.0	0.0	27.0	2,901.0	193.85
POSC	957.0	1,458.0	2,415.0	3.0	0.0	0.0	2,418.0	161.20
PSY	2,661.0	3,133.0	5,794.0	9.0	12.0	705.0	6,520.0	446.62
SOC	1,887.0	2,115.0	4,002.0	3.0	0.0	3.0	4,008.0	267.25
Liberal Arts & Sci	27,543.0	29,104.0	56,647.0	60.0	132.0	912.0	57,751.0	3,867.47
HONR	239.0	132.0	371.0	0.0	0.0	0.0	371.0	24.73
INTR	63.0	24.0	87.0	0.0	0.0	0.0	87.0	5.80
INTR	138.0	141.0	279.0	0.0	0.0	0.0	279.0	18.60
University Total	49,783.5	63,717.0	113,500.5	911.5	398.0	5,992.0	120,802.0	8,159.97

*FTE Formula: [(total undergrad + post-bacc & cert)/15] + (graduate cert + graduate)/12]

Average Class Load
(Full-Time and Part-Time)



For more information visit our web page at
<http://www.rowan.edu/open/irp>
or contact Kate Boland
at 256-4474 or boland@rowan.edu

Office of Institutional Research & Planning
Rowan University
Bole Hall Annex
Glassboro, New Jersey 08028
(856) 256-4146