

# Rowan University Uniprint Macintosh Printer Install Instructions:

---

## Printing from a Macintosh Computer

### How to Install Pharos on a Mac

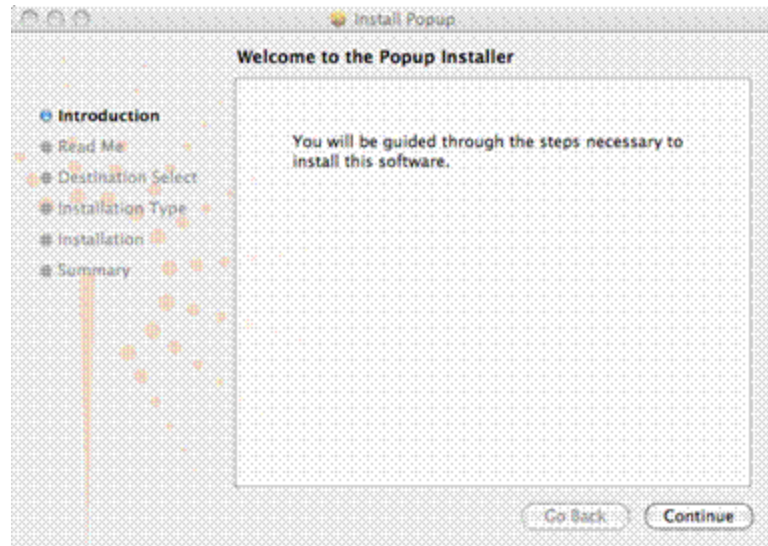
Rowan University has made available the use of Pharos Popup Printing from your Mac. You now have the ability to print from your Mac directly to any Rowan Open Lab printer. Please Connect to the Rowan University VPN Client first, if you do not have the vpn, you can install and download it [here](#). Once you are running and connected to the VPN,t you must download the Pharos Popup to your Mac. Pharos will only work for Macs running OS 10.4 or higher.

**Please follow these step-by-step instructions:**

1. Install Pharos Popup  
Click on "Pharos Popup" link below and download the installer to your computer.

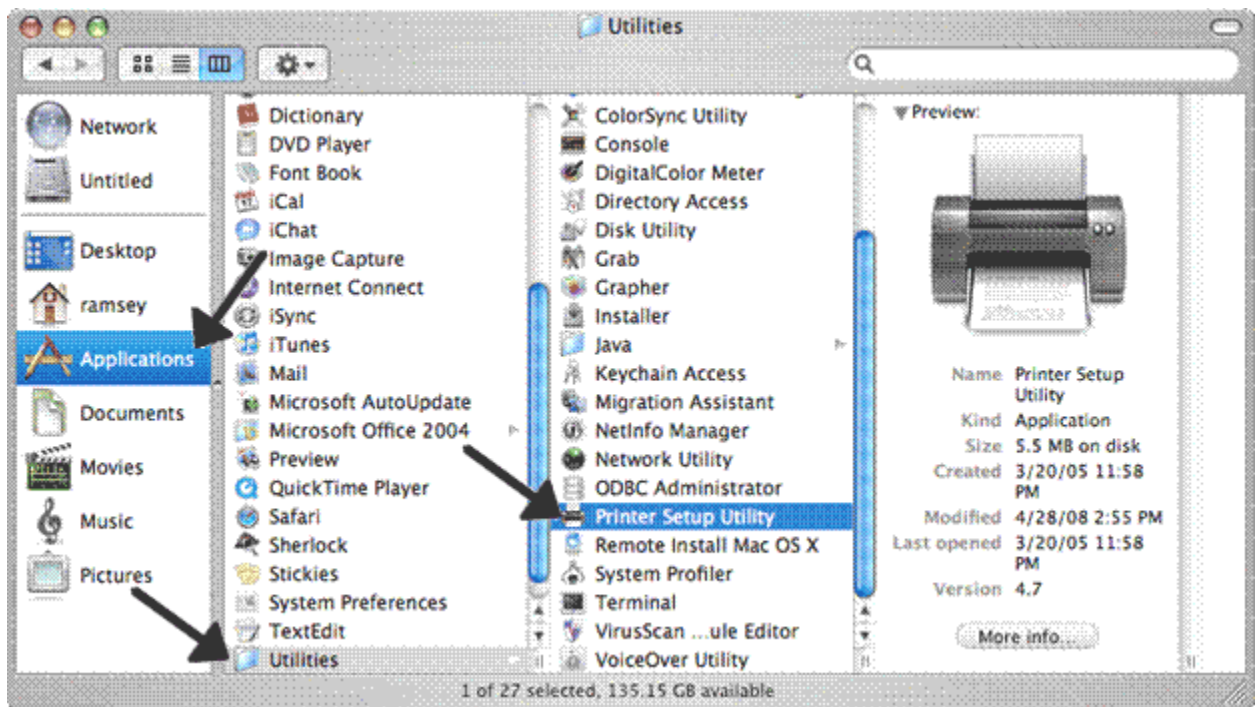
#### [Pharos Popup Download](#)

2. Double click on the downloaded file. Then double click on "popup.dmg" to begin the installation process. This will create a file on desktop with "Popup.pkg." Double click on this file to start the installation process. You may be asked to type in your laptop's administrator username and password.
3. The installation process will begin. Click "Continue" to go to the next step. The next screen has information about the installation process. Click "Continue." Select your main Mac drive as the destination for the installation then click "Continue." Click "Install" to begin the installation. You will be prompted to type in your computer's administrator username and password. When the process is finished, click "Ok."

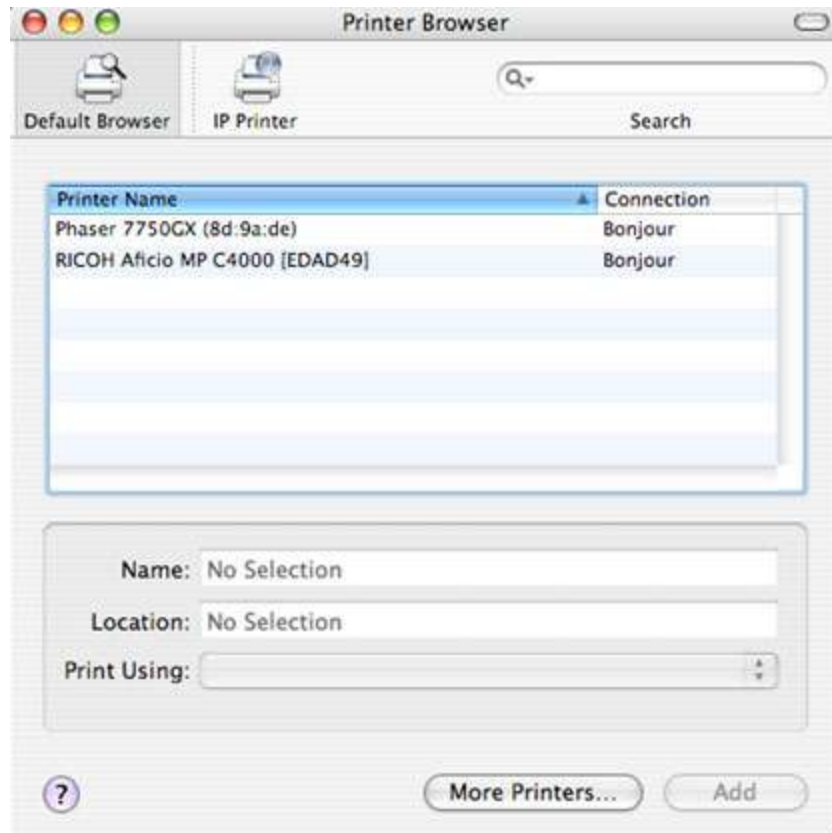


**Configure Pharos for Mac OS 10.4 [Click here if you have Mac OS 10.5 or later](#)**

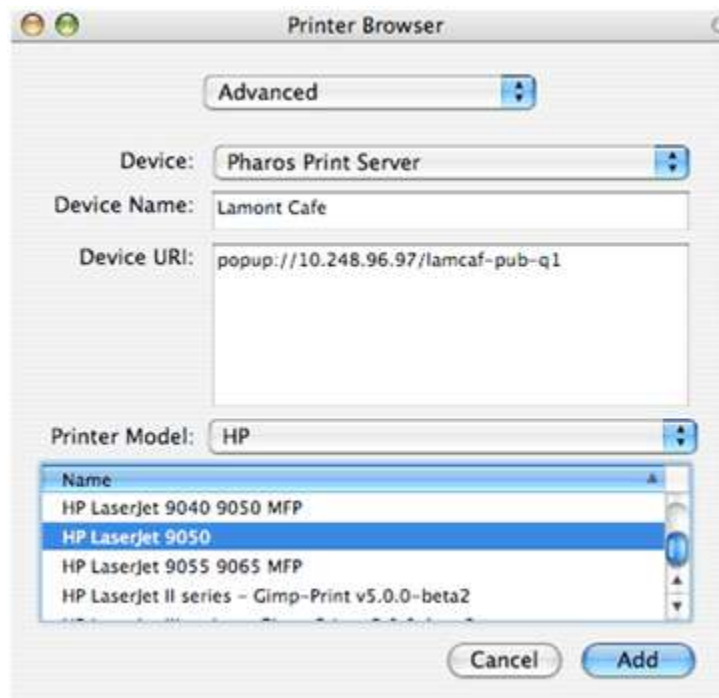
1. Go to "Applications" → "Utilities" and double click "Printer Setup Utility."



2. Click the "Add" button in the toolbar. Hold down the "Option" key and click the "More Printers" button.



3. In the first drop-down menu select "Advanced."



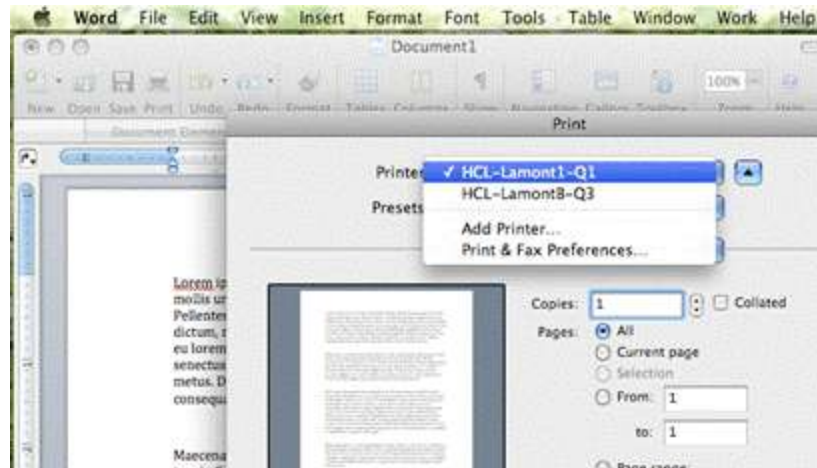
From the "Device" drop-down menu select "Pharos Print Server." In the "Device URL" box you need to type the address of the networked printer you want to print to. The address for the printers are:

Click the "Add" button. The printer will now show up in your list of printers.



Click the printer you would like to highlight, then click the "Show Info" button. Select "Duplex Unit" and then click "Apply Changes." The printer is now completely configured and ready to print.

4. To print to this printer, select "Print" as you normally would within an application, and then a printer from the drop-down list of available printers. To do double-sided printing, select the printer you want, click "Properties" → "Finishing" → "Double Sided Printing."

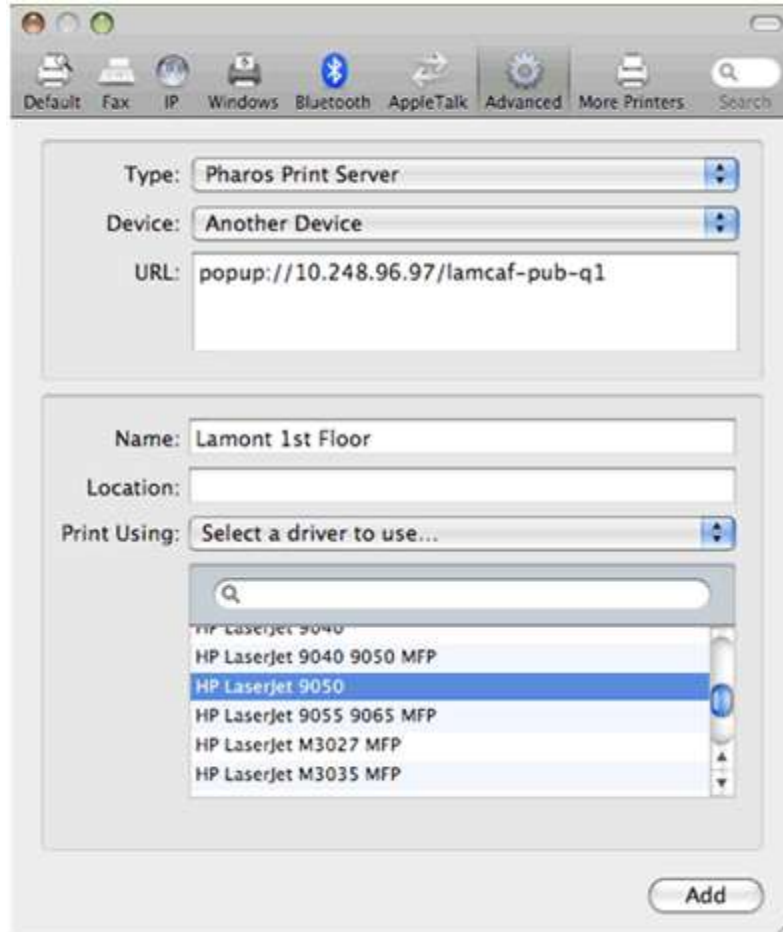


### Configure Pharos Mobile for Mac OS 10.5, 10.6

1. Open "System Preferences" and click on the "Print & Fax" icon. Click on the "Lock" icon and type in your laptop's administrator username and password.
2. Click the plus sign (+) above the lock.



3. Hold down the "Control" key and click on the toolbar. A popup menu will appear. Then select "Customize Toolbar." Drag the "Advanced" icon to the toolbar and close the customization menu.



Click on the "Advanced" button on the toolbar. In the drop-down menu for "Type" select "Pharos Print Server." In the "URL" box you need to type the address of the networked printer you want to print to. The address for the off campus queue should be as follows:

*popup://Uniprint3/Open-OffCampusLab-q*

In the box that says "Name" type in the name of printer.

Default Fax IP Windows Bluetooth AppleTalk Advanced More Printers Search

Type: **Pharos Print Server**

Device: **Another Device**

URL: `popup://10.248.96.97/lamcaf-pub-q1`

Name: **Lamont 1st Floor**

Location:

Print Using: **Select a driver to use...**

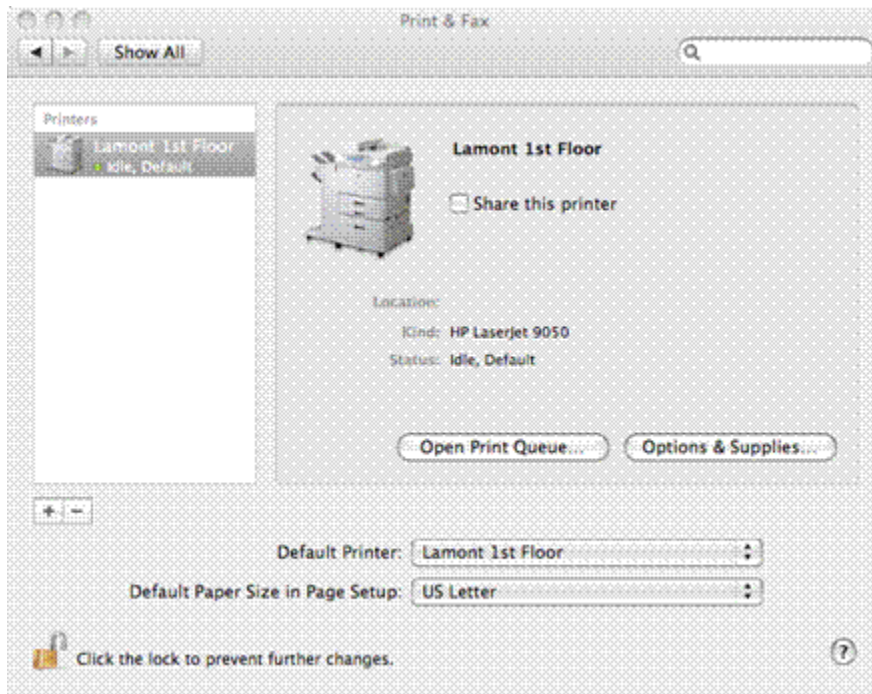
- HP LaserJet 9040
- HP LaserJet 9040 9050 MFP
- HP LaserJet 9050**
- HP LaserJet 9055 9065 MFP
- HP LaserJet M3027 MFP
- HP LaserJet M3035 MFP

Add

4. In the "Print Using" drop-down menu, click "Select a Driver to use...," select "HP LaserJet 9040," and click the "Add" button



5. Click the "Add" button. The printer will now show up in the list of printers you can send print jobs to.



6. To print to this printer, select "Print" as you normally would within an application. Select a printer from the drop-down list of available printers. Now your Job will be available at any of the 9040 printers in the Open labs ( Bunce, Rowan, Education 1<sup>st</sup> Flr, Mimosa)

Make sure you give it your Username NOT your banner ID when you print to it. Just login to the kiosk and it will be there. If there are any issues email [itsupport@rowan.edu](mailto:itsupport@rowan.edu)